

**SOLMATEO**  
Shining Light on Mental Health



Self-Guided  
Tour of Five  
Unique  
Homes

**HILLSBOROUGH  
SAN MATEO**

**Friday,  
May 16, 2025  
10 AM–3PM**

MEDIA SPONSOR

**PUNCH**  
SPIRIT OF THE PENINSULA

PROCEEDS BENEFIT

Mental Health Association of San Mateo County  
StarVista Crisis Center



LISA KARSON

G R O U P

## Serving the Peninsula and Beyond

Hillsborough, Burlingame,  
Millbrae, San Mateo...

Golden  
Gate

**Sotheby's**  
INTERNATIONAL REALTY

Top Producer

650.759.4644

[lisakarsonrealestate@gmail.com](mailto:lisakarsonrealestate@gmail.com)

Cal BRE# 01775831

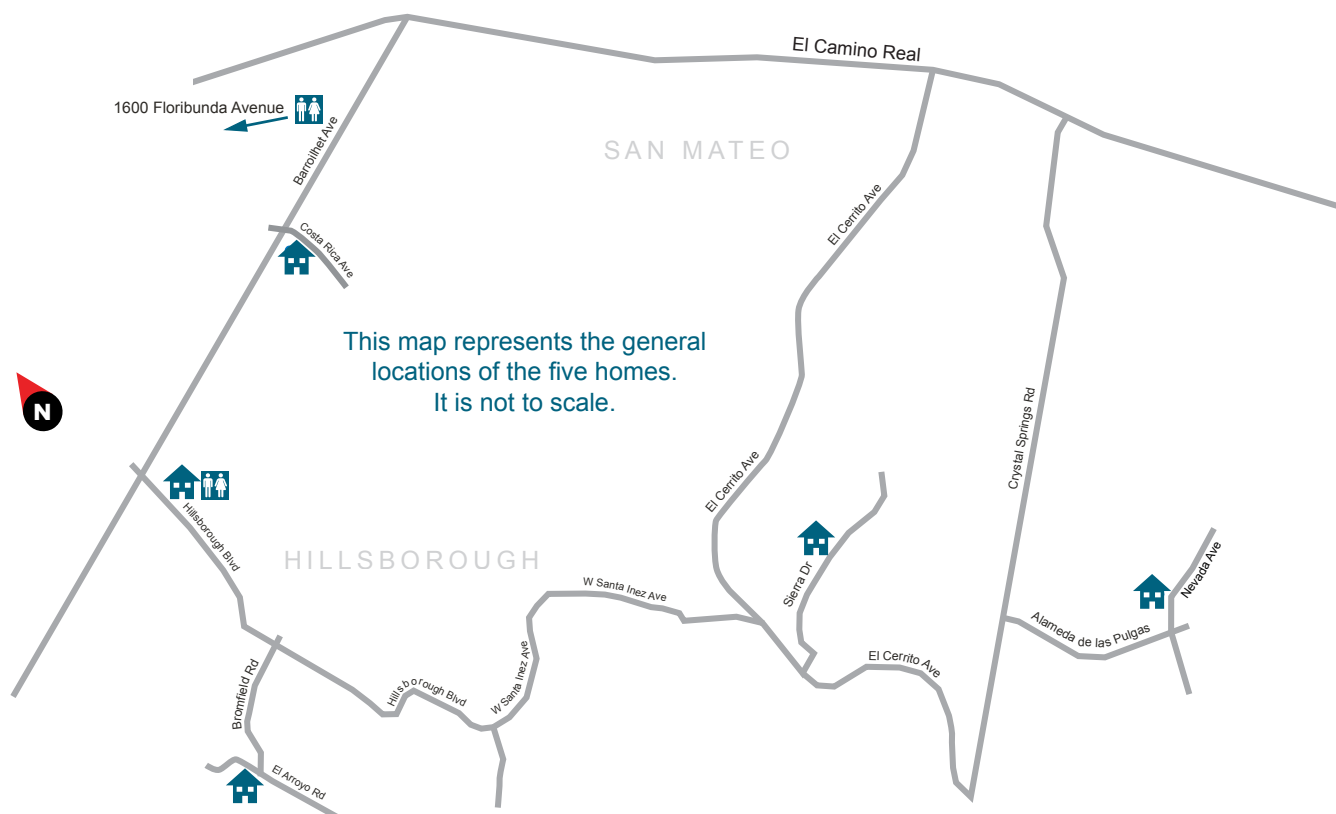
[LisaKarson.com](http://LisaKarson.com)

# TABLE OF CONTENTS

Map of Tour . . . . .	3
Welcome . . . . .	5
Who We Are: SolMateo Members . . . . .	6
What's Where? Vendors and Restrooms . . . . .	10
Who We Support:	
• MHA . . . . .	12
• StarVista Crisis Center . . . . .	45
Signature Kitchen Tour Sponsors:	
• Corporate . . . . .	28
• SolMateo Members, Family and Friends . . . . .	29
Tribute Donations: In Memoriam/In Honor . . . . .	29

## ENJOY THE TOUR HOMES IN ANY ORDER

Old World Spanish Colonial – 536 Nevada Avenue, San Mateo . . . . .	14–15
Colorful French Regency – 280 Sierra Drive, Hillsborough . . . . .	20–21
Contemporary Mediterranean – 463 El Arroyo Road, Hillsborough . . . . .	34–35
White Colonial Dreamhouse – 710 Hillsborough Boulevard, Hillsborough . . . . .	40–41
Charming European Inspired Ranch – 755 Costa Rica Avenue, San Mateo . . . . .	48–49





# **Your house has more to offer. And we can help you tap into it.**

With Star One, you get access to flexible home loans with low rates to realize your dreams. Join a credit union that thrives on improving the lives of our members and the community around us.

Star One is a proud sponsor of SolMateo.

[starone.org](https://starone.org)



Federally insured by NCUA





# WELCOME

Step inside, look around, and savor the experience. This year's Signature Kitchen Tour is more than just a showcase of stunning design—it is an invitation into the heart of five unique homes, each reflecting the personal style, values, and daily rhythms of the families who live there. From bold, modern aesthetics to cozy, timeless charm, every kitchen tells a story of gathering, nourishment, and creativity.

Our homes are more than just physical spaces; they are places of respite that support our mental well-being and the well-being of those around us. A welcoming space, a shared meal, or a simple conversation at the kitchen table can be sources of comfort, connection, and healing. By opening their doors, these homeowners are offering a glimpse into the places that ground and sustain them.

But beyond the beauty and inspiration of these homes, your participation in this tour serves a greater purpose. Mental health affects us all, and your support today directly contributes to increasing awareness and raising critical funds for agencies providing crisis services and supportive housing for our unhoused. These services are a lifeline for many, offering stability, care, and hope to those in need.

This event would not be possible without the generosity and dedication of so many. A heartfelt thank you to our homeowners, event sponsors, community partners, donors, and the incredible members of SolMateo, who work tirelessly to support this important cause. And of course, thank you to YOU, our guest, for your generosity and ongoing commitment to making a difference.

We both share a dedication to the cause and have been impacted by mental health in our own ways. By stepping into these kitchens, you are stepping up for mental health. Your presence here matters, and we are deeply grateful.

Let the tour begin!

Jamie Duddy and Jill Johnson, Kitchen Tour Co-Chairs



## got kitchen?

Would you like your home on the  
**44<sup>TH</sup> Signature Kitchen Tour?**

Do you know of a home  
that would be a good  
addition to next year's  
Tour?

Scan the QR code for  
more information



# WHO WE ARE

SolMateo is a volunteer fundraising organization that supports essential mental health services in San Mateo County. Mental health is a growing crisis in our community impacting our youth and families. As the largest private donor to the StarVista Crisis Center and the Mental Health Association of San Mateo County, we help these organizations provide critical services including a 24/7 suicide prevention hotline, mobile youth crisis response teams, and shelter for our neighbors experiencing homelessness.



## SolMateo Members 2024–2025

### ACTIVE

Arleen Agricola  
Mindy Carr  
Kay Coskey\*  
Jamie Duddy\*  
Diane Elcan  
Sherrie Friedman  
Sara Furrer\*  
Debbie Hirth\*  
Jill Johnson\*  
Judy Kell  
Lucie Kober  
Rochelle Kushner  
Kai Yee Lee\*  
Barbara Millett

Nancy Minnig  
Julie Sautter  
Jenny Smith  
Alexandra Strambi\*  
Sue Subbotin Riviello  
Jocelyn Swanson\*  
Cynthia Blair Tognotti\*  
Jane Underwood  
Barbara Williams

### ASSOCIATE

Jacqueline Bigelow  
Liz Buljan

### PATRON

Shar Beckheyer-Arnold  
Angela Bruno-Castro  
Judi Cittadini  
Perissa Clark  
Nina Clinton  
Debbie Elowson  
Josie Ewing  
Liz Goodrow  
Cindy Hohle-Duncan  
Chemi Lo  
Melissa Macko  
Jana Magginetti  
Catherine Maloney  
Ann Malouf

Pam Mincey  
Angela O'Connor  
Kathy O'Rourke  
Cris Perry  
Cathie Reisman  
Patricia Rodley  
Jackie Sage  
Flor Santana  
Eileen Silver  
Marian Sosnick  
Desarie Sy  
Michelle Taylor  
Mary Ann Teixeira  
Cindy Thompson

*\*Board of Directors*



# Congratulations SolMateo

on 43 years of kitchen tours  
and 49 years of supporting  
those in our community struggling  
with mental health, homelessness  
and thoughts of suicide

Donna and Eric Colson



PROUD TO SUPPORT  
SOLMATEO'S KITCHEN TOUR



*Kerns*  
Fine Jewelry

214 Lorton Avenue, Downtown Burlingame - 650.348.7557 - [kernjewelers.com](http://kernjewelers.com)

**Save the Date**

# *Snow Day!*

*Holiday Auction & Luncheon*

**December 5, 2025**



**Everyone is impacted by the mental health crisis. Join us to ensure funding exists for the critical services which help our youth, families, and neighbors in need.**

## **HOW TO JOIN SOLMATEO**

Learn how to join this impactful group of women by scanning the QR code and be a part of the change you want to see!!



**[solmateo.org](https://solmateo.org)**



# WHAT'S WHERE?

## Vendors



### **536 Nevada Avenue, San Mateo, Pages 14–15**

<b>Drinks</b>	Adobe Mountain Sparkling Mineral Spring Water
<b>Food</b>	Sibby's Cupcakery
<b>Exhibit</b>	Mental Health Association of San Mateo County
<b>Housewares</b>	F. Dorian Decorative Arts
<b>Music</b>	San Francisco Jazz Youth Collective
<b>Will Call</b>	Ticket pick-up



### **280 Sierra Drive, Hillsborough, Pages 20–21**

<b>Drinks</b>	Sippin' Pretty Tap Truck
<b>Food</b>	Preston's Candy
<b>Accessories</b>	Flutter Eyewear
<b>Media</b>	Mark at the Mic
<b>Meet the Builder</b>	D'Elia Construction



### **463 El Arroyo Road, Hillsborough, Pages 34–35**

<b>Drinks</b>	Cafe Carrello
<b>Housewares</b>	Anthem San Francisco
<b>Jewelry</b>	Ashley Ashoff



### **710 Hillsborough Boulevard, Hillsborough, Pages 40–41**

<b>Food</b>	Bonjour Bakehouse
<b>Accessories</b>	Handbags by UB Chic
<b>Exhibit</b>	StarVista Crisis Center
<b>Jewelry</b>	Waffles & Honey Jewelry



### **755 Costa Rica Avenue, San Mateo, Pages 48–49**

<b>Food</b>	LL's Kitchen
	Suki's Honey Bees
<b>Clothing</b>	New Generation Vintage
<b>Housewares</b>	Hudson Grace

## Restrooms



1600 Floribunda Avenue — Hillsborough Town Hall, 10 AM–3 PM  
710 Hillsborough Boulevard — Portable toilet outside tour home





# ALLWOOD CONSTRUCTION

Building with a Standard of Excellence

650 366 9521

[www.AllwoodConstruction.com](http://www.AllwoodConstruction.com)

Licence # 380075 - Est. 1979





# MHA

Mental Health Association  
of San Mateo County

Empowering People to Create Their Best Life



## Your support of SolMateo will mean that:

**250** families will be housed

**35** young adults are off the streets and in housing

**813** formerly homeless adults will be safe in affordable housing

**20,250** hours of support including 4,637 hours of Occupational Therapy will be provided



“

*“MHA has been a miracle in my life. They rescued me from living on the streets.”*



“

*“MHA gave me hope. I don't know where I'd be without them. I'm overwhelmed with their tremendous compassion.”*



“

*“If I hadn't been given a bed at Spring Street Shelter, I wouldn't have had the chance.”*





Colleen Dowd Saglimbeni  
CDSINTERIORS.COM



# OLD-WORLD SPANISH COLONIAL



IN THE HOMEOWNERS' WORDS

“

*We love to cook, so preparing meals with the beautiful Walker Zanger backsplash brings us immense joy.*



This Spanish Colonial style home was originally built in 1932 and recently remodeled to become the ideal house for a busy family. It retains the original old-world charm and craftsmanship while adding elements that allow the family to gather in open spaces with modern amenities. The homeowners are especially fond of the light and airy kitchen and enjoy their morning coffee there each morning.

## FIRST IMPRESSION

One is captivated by the charm of this property with its array of playful architectural moments. The façade features an elegant arched front window that filters light beautifully into the interior. A graceful balcony overlooks the front gardens, offering a perfect vantage point to appreciate the landscaping below. The covered front porch provides a welcoming transition between outdoors and in, inviting visitors to pause and appreciate the craftsmanship before stepping inside.



# HOME RESOURCES

**ARCHITECT** RC Wehmeyer Design Build

**BUILDER** Joseph Feeney Construction

**KITCHEN & INTERIOR DESIGN** Colleen Dowd Saglimbeni Interiors

**LANDSCAPING** Jim Redman, Elements Landscaping

## THE KITCHEN

Cabinetry: Custom shaker style painted in Benjamin Moore Swiss Coffee, Precision Cabinets

Backsplash: Da Vinci Marble

Bar backsplash: Biseau Verdigris, Walker Zanger

Countertops: Vadara quartz

Stove backsplash: Duquesa Cement Fatima Mezzanotte, Walker Zanger

Flooring: Porcelain Tile, All Natural Stone

Paint: Benjamin Moore Revere Pewter

## KITCHEN DECOR

Faucets: Waterstone Luxury Fixtures, Belmont Hardware

Hardware: Colonial Hardware, Belmont Hardware

Lighting: Robinson Large Pendant, Visual Comfort & Co.

## APPLIANCES

Viking stove, Bosch dishwasher and Sub-Zero refrigerator, Atherton Appliance

## DINING/LIVING AREA

Fritz Rope counter stools by Palacek Handcrafted Furniture

Dining table and chairs, Restoration Hardware

Custom sideboard, Modern History

Antique Palladian mirror, Made Goods

Family room chairs, Joybird

## ALONG THE WAY

Paintings by Paul Norwood and Maria Burtis, Stephanie Breitbard Fine Arts

Gray Malin Photography

Jennifer La Pierre, Anthem

## STYLIST

Colleen Dowd Saglimbeni Interiors

## FLORAL DESIGN

Henry's Place

## VENDORS

Adobe Mountain Sparkling Mineral Spring Water

F. Dorian Decorative Arts

Mental Health Association of San Mateo County

San Francisco Jazz Youth Collective

Sibby's Cupcakery

*"Back when SolMateo was known as Community Service League, our tour books came with a tasty bonus—recipes! Many were favorites from our members' kitchens, passed around so often that their origins became a bit of a mystery. We thought it would be fun to bring that tradition back. So, this year's tour book comes with a dash of history, a pinch of nostalgia, and a lot of flavor. Dig in—we hope you enjoy them!" — Jill and Jamie*



## Curried Chicken Salad with Grapes

- 1/2 cup plain 2% Greek yogurt
- 2 Tbsp mayonnaise
- 1 tsp curry powder
- 1-1/2 Tbsp mango chutney
- 2 tsp fresh lemon juice
- Kosher salt and black pepper
- 3 cups cooked, diced or shredded chicken breast
- 3/4 cup halved red grapes
- 1/3 cup chopped scallions
- 1/4 cup sliced almonds, toasted
- 1/4 cup chopped celery

## DIRECTIONS

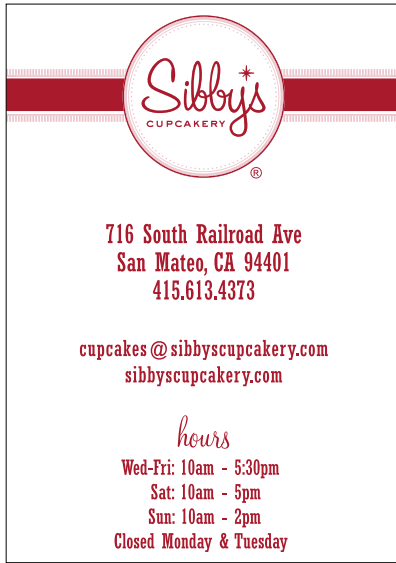
Mix the yogurt, mayonnaise, curry powder, chutney, and lemon juice together in a large bowl. Season the mixture with a pinch of salt and black pepper.

Stir in the chicken, grapes, scallions, almonds, and celery. Serve chicken salad on a bed of lettuce or use it to make sandwiches, wraps or lettuce wraps. You can also serve it on crackers, crostini, mini croissants, or cucumber slices as an elegant appetizer.

— Dr. Sonali Ruder, [thefoodiephysician.com](http://thefoodiephysician.com)



*"Recipes are just memories waiting to be made."*



# ANDERSON YAZDI

LLP

## HWANG MINTON + HORN

Anderson Yazdi Hwang Minton + Horn LLP is one of the largest Trusts & Estates law firms in California serving individuals, fiduciaries and related entities. We deliver sophisticated advisory and litigation services to a diverse base of high net worth clients, on a range of U.S. and international matters.

We are proud to support the  
2025 SolMateo Signature Kitchen Tour

350 Primrose Road • Burlingame, CA 94010  
650.212.5900 • [www.andersonyazdi.com](http://www.andersonyazdi.com)



# The Gina Haggarty Group

Mother-Daughter Duo in Luxury Peninsula Real Estate



## Experience *Is* The Difference

*We are honored to sponsor SolMateo's 2025 Kitchen Tour.*

If you are thinking of buying or selling Real Estate, call Gina & Jenny today.

Let's talk about how we can achieve your goals.

---

650.207.5192 | [GinaHaggarty@gmail.com](mailto:GinaHaggarty@gmail.com) | 650.678.4151 | [Jenny@HaggartyGroup.com](mailto:Jenny@HaggartyGroup.com)

[WWW.HAGGARTYGROUP.COM](http://WWW.HAGGARTYGROUP.COM)



**Stephanie O'Rourke**  
landscape designer

CA Lic. #777808  
1345 Howard Ave, Suite 203  
Burlingame, CA 94010  
650-347-2499  
stephanie@landscapereflections.design

COMPASS



**Donna Marie Baldwin**

*proudly supports*

**SolMateo**

*Thank you for your unwavering support  
of mental health programs in our community.*

**DONNA MARIE BALDWIN**

DRE #00560346 | Realtor® | DonnaMarieBaldwin.com  
Donnamarie.Baldwin@Compass.com | (650) 796-6080  
~ Serving the Peninsula since 1976 ~

**KEITH SCHUMACKER** | DRE #02135275 | Realtor®  
(650) 826-1712 | Keith.Schumacker@Compass.com



**HOUSE FLOWERS**

BURLINGAME, CA

650.302.0921

@houseflowersburlingame



**POTTERY BARN**  
FREE INTERIOR DESIGN SERVICES

STANFORD  
800 STANFORD SHOPPING CENTER Palo Alto CA 94304  
650.321.1646



# HOMES

Architecture  
Interiors  
Landscapes



We build houses because they embody the  
fundamental relationship between  
people and place.  
They capture the essential narrative of...  
life / family / happiness.

**DTA** Dreiling Terrones **Architecture** Inc.  
Architecture | Infrastructure | Environments

Burlingame | Healdsburg

650 696 1200

## COLORFUL FRENCH REGENCY

Dennis Mayer Photography



The owners of this French Regency home, constructed in 1962, have a passion for color, art, and a little whimsy. Star-patterned floor tile, dramatic paint and an interactive video LED installation lure you into the main house. Beyond the enormous sliding glass doors, the azure blue pool and exterior salmon walls showcase the ADU, completed in 2025. Treat yourself to a complete oasis from the kitchen to the bedroom to the living space in a serene palette of blues and greens.

### FIRST IMPRESSION

This charming ADU culinary space is awash in vibrant hues offering bright views of the lush natural landscape outside.

IN THE HOMEOWNERS' WORDS

“

*The blue Raku tile is a repeat from our first ever remodel decades ago. We loved it so much we brought it back!*





# HOME RESOURCES

**ARCHITECT** Flury Bryant Design Group

**BUILDER** D'Elia Construction Inc.

**KITCHEN & INTERIOR DESIGN** Homeowner

**LANDSCAPE** Golden Eagle Landscape

## THE KITCHEN

Cabinetry: Wilsonart Slab Laminate in Indigo, Danmar Cabinet Company

Backsplash: Sonoma Tile Euphoria in Thunder Road, All Natural Stone

Countertops: Quartzite composite, All Natural Stone

## KITCHEN DECOR

Faucets: Franke, Decorative Plumbing Supply and Waterstone Luxury Fixtures, Belmont Hardware

Sink: Elkay, Decorative Plumbing Supply

Hardware: Belmont Hardware and Petra Hardware

Paint: Benjamin Moore Stormy Monday/Swiss Coffee

## APPLIANCES

Bosch range, refrigerator & dishwasher, Davies Appliance  
Vent-A-Hood range hood

## LIGHTING

Outdoor pendants: Swell Wide Pendant by Pablo Designs, Lumens.com

Wall sconces: Justice Design Group

## DINING/LIVING AREA

ADU living room: Anthropologie

ADU patio: Roche Bobois "Mah Jong" lounges, Kartell chairs and small tables

Dining table: Terra Outdoor Living

Kartell dining chairs: Italian Luxury Interiors

Patio furniture: McGuire

## ALONG THE WAY

Artwork: Jim Campell (video art) & Emil Lukas (thread painting), Hosfelt Gallery

Photography: Adam Fuss, Chris Bucklow & Richard Misrach, Frankel Gallery

## STYLISTS

Napoleon at Home

Pottery Barn Stanford

## FLORAL DESIGN

House Flowers Burlingame

## VENDORS

D'Elia Construction Inc.

Flutter Eyewear

Mark at the Mic

Preston's Candy

Sippin' Pretty Tap Truck



## Chili Egg Puff

10 eggs

1 pint cottage cheese

1/2 cup melted butter

1 lb jack cheese, grated

1/2 cup flour

1 tsp baking powder

1/2 tsp salt

2 - 4 oz cans diced green chiles

## DIRECTIONS

Beat eggs and add everything else. Pour into a buttered 9x13 inch dish or two 9-inch pie plates (glass). Bake at 350 degrees for 35 minutes or until firm/golden color and knife comes out clean. Serve with salsa or Pico de Gallo. Serves 6-8.

— SolMateo favorite



"The best memories are made when gathered around the table."

# DANMAR CABINET COMPANY

KITCHEN & BATH SPECIALIST



STOCK. SEMI-CUSTOM. CUSTOM

COME VISIT OUR SHOWROOM:  
12 41ST AVE. SAN MATEO CA  
94403

GIVE US A CALL AT:  
650.571.1230

*Holly Braithwaite*  
Chief Sipper

650-288-5621  
sippinprettytaptruck@gmail.com  
www.sippinprettytaptruck.com

Follow us on  
@sippinpretty\_taptruck



NAPOLEON AT HOME  
Interior Design

408.893.8687  
napoleonhome.com

PROUD TO  
SUPPORT  
SOLMATEO  
WITH BEAUTY  
AND HEART.

AHSAM.COM



AH SAM FLORAL Co.



FLUTTER  
EYEWEAR









**Thank you volunteers  
and sponsors for  
making the  
43<sup>rd</sup> Signature Kitchen  
Tour a success!**



**JM JUDY MEUSCHKE**  
Realtor® Lic# 01471840  
**650.400.2543**  
judy.meuschke@compass.com  
judymeuschke.com  
COMPASS 1440 Chapin Ave., #200  
Burlingame, CA 94010

Window fashions to match  
every design personality.

**HunterDouglas**



Pirouette® window shutters

Hunter Douglas offers a wide variety of window fashions in an array of fabrics, textures and colors. Contact us today. We're the Hunter Douglas experts, guiding you in the selections that'll make your home even more beautiful—whatever your style.

**Rebarts Interiors LLC**  
1227 Burlingame Ave. Burlingame, CA  
M-F: 10:00 am - 5:00 pm  
Sat: 11:00 am - 4:00 pm  
(650) 348-1268  
www.rebarts.com



HunterDouglas Gallery™

©2022 Hunter Douglas. All rights reserved.  
All trademarks used herein are the property of Hunter Douglas or their respective owners.15948418

**JULIE SAUTTER**  
INTERIOR DESIGN



(650) 207-9757  
www.juliesautter.com

**Edward Jones**

> edwardjones.com | Member SIPC



**We support SolMateo.**



**Erin Sinclair, CFP®**  
Financial Advisor  
411 Borel Avenue  
Suite 505  
San Mateo, CA 94402  
650-343-0700

MKT-58940-A-A1 AECSPAD 24690248

# geoffreys

DIAMONDS & GOLDSMITH

WHERE THE BAY GETS ENGAGED

*Since 1983*



1313 Laurel Street Suite 100 San Carlos, CA 94070  
650-591-0301 | [sancarlos.geoffreysdiamonds.com](http://sancarlos.geoffreysdiamonds.com)





[impastosancarlos.com](http://impastosancarlos.com)



# EYH

EVART, YOUNG & HOBBS  
Investment Management

Derek M. Hobbs, MBA  
PRINCIPAL

✉ [derek@eyhadvisers.com](mailto:derek@eyhadvisers.com)

☎ 650-802-0342

🌐 [eyhadvisers.com](http://eyhadvisers.com)

Evert, Young & Hobbs  
3 Lagoon Drive, Suite 155  
Redwood City, CA 94065



# COMPASS

*Personalized Mid-Peninsula Real Estate*

As an ongoing supporter of SolMateo, I am proud to be a contributor to this year's 43rd Signature Kitchen Tour. Please join me in supporting this vital organization, dedicated to assisting our local community with issues surrounding mental health. Proceeds from the event benefit Star Vista Crisis Center and the Mental Health Association of San Mateo County, helping community members obtain important resources in times of need.

To learn more about SolMateo, make a donation and/or to volunteer, please visit [SolMateo.org](http://SolMateo.org).



**RALPH KING**  
FURNITURE CABINETRY

Specializing in custom cabinetry since 1998

100 South Linden Ave.  
South San Francisco, CA 94080

[www.ralphkingcabinetry.com](http://www.ralphkingcabinetry.com)  
415.822.5847



DUDDY EXECUTIVE SERVICES INC.

**Leadership On Demand**

Steven Duddy  
+1 (650) 918-8596  
[Steve@DuddyExecutiveServicesInc.com](mailto:Steve@DuddyExecutiveServicesInc.com)  
[www.DuddyExecutiveServicesInc.com](http://www.DuddyExecutiveServicesInc.com)

# 2025 SIGNATURE KITCHEN TOUR SPONSORS

## Corporate Sponsors

### SILVER — \$7,500



### BENEFACTOR — \$2,500



Donna and Eric Colson



### Patron — \$1,500

All Natural Stone  
Allwood Construction, Inc.  
The Buljan Group, COMPASS  
CDS Interiors  
Da Vinci Marble, Inc.  
Dreiling Terrones Architecture, Inc.  
Geoffrey's Diamonds & Goldsmith  
Gina Haggerty Group  
Kerns Fine Jewelry  
TRG Architecture + Interior Design

### Supporter — \$750

Anderson Yazdi Hwang Minton +  
Horn LLP  
Art Attack!  
Christian Huebner Interiors, Inc.  
Daisy  
Debbie Elowson, COMPASS  
Ewart, Young & Hobbs Investment  
Management  
Gehrels Custom Homes  
Impasto by Terun  
J. P. Lindstrom, Inc.  
Nyhus Design Group  
Reflective Color & Design  
Quinn Construction

### Friend — \$350

Ah Sam Floral Co.  
Donna Marie Baldwin, COMPASS  
Crippen & Flynn Woodside &  
Carlmont Chapels  
Danmar Cabinet Company  
D E A Security Systems Co., Inc.  
Derby Interiors & Design  
Duddy Executive Services Inc.  
Jamie H. Duddy, M.F.T.  
Gilmans Kitchens and Baths  
Hunter Douglas Gallery by Rebarts  
Interiors  
Izmirian Roofing and Sheet Metal  
Julie Sautter Interior Design  
Katharine Webster Inc.  
Lindquist, von Husen & Joyce, LLP  
Ellen Mazzoni, COMPASS  
Judy Meuschke, COMPASS  
Stephanie O'Rourke, Landscape  
Reflections  
Ralph King Furniture & Cabinetry  
S. G. Fine Homes and Builders, Inc.  
Erin Sinclair, Edward Jones  
Ed Stephens, Coldwell Banker  
Alexandra Strambi, Coldwell Banker  
Studio Shop Gallery

### Contributor — \$200

Alana's Cafe  
Burlingame Woman's Club  
Nicole Cheever, Hair Repair Expert  
Crystal Cleaning Center  
Decorative Plumbing Supply  
EASA Architecture, Ellis A. Schoichet AIA  
Fogbird  
Form + One Design  
Violet Coturri Guerra, Coldwell Banker  
L'Escape Spa  
Lynch Electric & Sons Inc.  
Mariners Point Golf Center  
Matteoni O'Laughlin & Hechtman  
Location Cubed  
Orlando Trujillo Painting Contractor, Inc.  
Pausa Bar & Cookery  
Peninsula Scholars  
Poop Patrol RWC Inc.  
Sarah Nail Salon  
Sue Subbotin Interiors  
Swanson Kitchens, Inc.  
Tony Ward Construction  
Marisa Wachhorst, Keller Williams  
Realty

# 2025 SIGNATURE KITCHEN TOUR SPONSORS

## Members, Family & Friends Sponsors

### Bronze

Philip and Karen Burkhart Family Fund  
Hirth Family Foundation  
Robert J. and Marion E. Oster  
Cindy and Scott Thompson

### Benefactor

Judi and Pete Cittadini  
Kai Yee Lee and Wilson Leung  
Chemi Lo

### Supporter

Sonja and William Davidow  
Jill and Derek Johnson  
Jenny and Garrett Smith  
Jane and Sam Underwood

### Friend

Jacque Bigelow  
Laurel and Norman Book  
Mindy Carr  
Sherrie and Mel Friedman  
Christine Holterman  
Martha and Roger Mertz  
Nancy Minnig

### Contributor

Nina Clinton  
Kay and Larry Coskey  
Sara Furrer and Annette Bianchi  
Judy and Rick Kell  
Lucie Kober  
Barbara Millett  
Jocelyn Swanson  
Michelle Taylor

### Tribute Donations\*

#### In Honor of

Olivia Bellamy  
Liz Buljan  
Diane Elcan  
Elisha Finney  
Sherrie Friedman  
Debbie Hirth  
Ann Malouf

#### In Memoriam

Elizabeth Rieke

*\*Reflects donations made between April 2024 and March 2025*

# Thank you

## FOR YOUR SUPPORT



CHRISTIAN HUEBNER  
INTERIORS, INC.

1325 HOWARD AVENUE, SUITE 320

BURLINGAME, CALIFORNIA 94010

(415) 596-6700

CMHUEBNER@HUEBNERINTERIORS.COM



# Art Attack!

OIL PAINTING • CLASSES • CAMPS • PARTIES



@ArtAttack911

www.ArtAttack911.com

(650) 552-0001



WHERE YOU PRINT

# colorprint

MAKES A DIFFERENCE

Every Quarter Colorprint Donates 25% of Profits to  
**Local Charities** Helping Kids and Families.

650.697.7611 • [www.colorprint.com](http://www.colorprint.com)



STUDIO  
SHOP | GALLERY

244 Primrose Road  
Burlingame, CA  
650.344.1378  
[www.studioshopgallery.com](http://www.studioshopgallery.com)



348 Lorton Ave  
Burlingame, CA 94010

650-347-7706

[www.lescapespa.com](http://www.lescapespa.com)  
[jennifer@lescapespa.com](mailto:jennifer@lescapespa.com)





**QUINN**  
**CONSTRUCTION**  
 650-465-0219 Lic# 802192

Building your future, one brick at a time.  
[quinnconstructioninc.net](http://quinnconstructioninc.net)



ANTHEM  
 SAN FRANCISCO  
 Your Destination  
 for Inspiration

GIFTS • HOME GOODS • JEWELRY • BEDDING • BATH



[WWW.ANTHEMSF.COM](http://WWW.ANTHEMSF.COM)  
 @ANTHEMINTERIORS



katharine webster inc.  
[webstermla.com](http://webstermla.com)  
 LANDSCAPE DESIGN



DA VINCI  
MARBLE

Your dream kitchen.  
Our hand-selected Italian marble.

SLABS • OUTDOOR • TILE • CUSTOM

Designer: Lauren Berry | Photographer: Bess Friday

Material: Calacatta Oro Marble

Da Vinci Marble Showroom: 1480 Industrial Road, San Carlos, CA 94070

650.595.2500 | [www.davincimarble.com](http://www.davincimarble.com)

# CONTEMPORARY MEDITERRANEAN



Dennis Mayer Photography



Nestled within the timeless charm of a Mediterranean-style estate originally built in 1930 and meticulously remodeled in 2024, this enchanting home epitomizes versatile living. The airy interior, bathed in natural light, integrates views of lush gardens and the serene bay perfectly from nearly every vantage point. State-of-the-art appliances blend with classic materials throughout the kitchen, creating a culinary haven ideal for both daily family life and hosting grand soirées. Outside, the skillfully landscaped Mediterranean sanctuary beckons, offering a picturesque backdrop for relaxation, entertaining, and cherished family moments. Homeowners revel in the seamless flow of light and color palette, connecting indoor elegance with the tranquil outdoor splendor.

## FIRST IMPRESSION

Beautiful indoor/outdoor feel. Stunning kitchen island lighting is design-forward and gives the room an immediate boost.

“  
IN THE HOMEOWNERS' WORDS

The crew found a horseshoe deep in the ground when they were digging the foundation. Could the property have housed horses at one point? We'll likely never know.





# HOME RESOURCES

**ARCHITECT** Charles Barnett & Associates

**BUILDER** Quinn Construction

**KITCHEN & INTERIOR DESIGN** Lorri Dyner Design & Dimitra  
Anderson Home

**LANDSCAPING** Katharine Webster Landscape Design

## THE KITCHEN

Cabinetry: Custom, West Summit Cabinetry

Countertops: Calacatta Caldia Marble, DaVinci Marble

Walls/backsplash: Zellige tile

Pantry counters: Dekton (Kelya)

Range hood: Master Plaster

## KITCHEN DECOR

Faucets: Kallista Quincy

Hardware: Madison by Waterstreet Brass

Counter Stools: Rejuvenation

## APPLIANCES

Wolf stove, Sub-Zero refrigerator/freezer, Bosch  
dishwasher and Perlick wine fridge

## LIGHTING

Island pendant: Custom, Allied Maker

Pantry ceiling: West Elm

Wall sconces: Hulton Sconce, Visual Comfort & Co.

## DINING/LIVING AREA

Kitchen table/chairs: Four Hands/Studio McGee

Sofa: Serena & Lily

Rug: Dovetail

Rattan triangle chair: Anthropologie

Coffee table: Family heirloom

## ALONG THE WAY

Artwork: Andy Warhol, original, ink drawing and watercolor

## STYLISTS

Andra Norris Gallery

Anthem San Francisco

## FLORAL DESIGN

Floral Art + Décor

## VENDORS

Anthem San Francisco

Ashley Ashoff

Cafe Carrello



## Penne with Olives and Ricotta

- 1 cup Kalamata Olives – pitted
- 1 garlic clove peeled
- 1 Tbsp capers, drained
- 2 Tbsp extra virgin olive oil
- 2 anchovies
- Juice of 1 lemon
- 1/4 cup chopped fresh basil
- 3/4 cup ricotta cheese
- 2 roasted red peppers
- 1 lb penne or small ziti pasta

## DIRECTIONS

Slice olives. Combine olives, garlic, capers, olive oil, anchovies, lemon juice and half the basil in a food processor fitted with metal blade. Pulse until coarsely chopped and reserve

In a small bowl, combine the remaining basil with ricotta and reserve. Remove the stems and seeds of the roasted red peppers and cut into 1/2 inch pieces.

Cook the pasta in salted water until al dente. Drain and transfer to a serving bowl. Add reserved olive and ricotta mixtures. Toss well, scatter the red peppers over the top and serve warm or at room temperature.



"Home is where  
the oven is always  
warm and the table  
is always full."

**SOLMATEO**  
Shining Light on Mental Health  
invites you to join us as we  
introduce designer

*Ashley Ashoff*  
www.ashleyashoff.com




Personal  
Appearance  
Trunk Show  
Benefitting  
**SOLMATEO**  
Shining Light on Mental Health

2025 Signature  
Kitchen Tour  
Friday, May 16th  
10am to 3pm

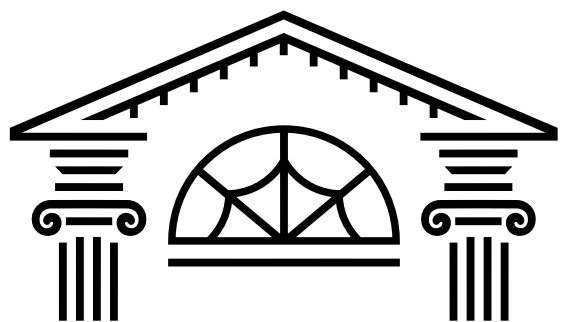


**caffe carrello**  
COFFEE CATERING

**Kyle Mills-Bunje**  
(650) 321-3833  
kyle@caffecarrello.com  
www.caffecarrello.com

 **ANDRA NORRIS GALLERY**

1107 Burlingame Ave  
Burlingame, CA 94010 USA  
tel: 650-235-9775  
info@andranorrisgallery.com  
www.andranorrisgallery.com



**JP LINDSTROM  
— INC —**

GENERAL BUILDING CONTRACTORS

**Jake, Jeff, Jacki Lindstrom**

Ph: 650.343.9562

Fx: 650.343.1700

www.jplindstrom.com

Lic. 762623

1015 California Drive

Burlingame, CA 94010





The Buljan Group is the real deal when selling or buying real estate on the Peninsula, more importantly their love of the community shows year after year. They are a powerful team to have on your side.



**Pierre Buljan**  
650.400.1188  
pierre@buljangroup.com  
DRE 00697572



**Alex Buljan**  
650.438.0886  
alex@buljangroup.com  
DRE 01920904



**Liz Buljan**  
Marketing and Management  
650.208.0880  
liz.buljan@compass.com

We are proud to  
sponsor and support  
SolMateo and the  
2025 Kitchen Tour!

**THE BULJAN GROUP**  
LUXURY REAL ESTATE

**COMPASS**

Compass is a licensed real estate broker (DRE 0151229) in the State of California and adheres to Equal Housing Opportunity laws. All material presented herein is provided for informational purposes only. Information is compiled from sources deemed reliable but is subject to errors, omissions, changes in price, condition, sale or withdrawal without notice. No reliance is made as to accuracy of any description. All measurements and square footages are approximations. Exact dimensions can be obtained by measuring the services of an architect or engineer. This is not intended to solicit property already listed.

# the PERFECT FINISH



ALL NATURAL STONE

*An unparalleled selection of rare & exotic stone, luxury porcelain & handmade tile*

BURLINGAME | SAN JOSE | BERKELEY | DUBLIN

DESIGN: MELINDA MANDELL INTERIOR DESIGN CONSTRUCTION: GUILD CRAFT BUILDER

PHOTOGRAPHY: BESS FRIDAY STYLING: BETH PROTASS





INTERIOR DESIGN



**N|D|G**  
NYHUS | DESIGN | GROUP



**Reflective**  
Color & Design

**Diane Hendrix**

☎ (650) 504-9272

✉ [diane@reflectivecoloranddesign.com](mailto:diane@reflectivecoloranddesign.com)

🌐 [reflectivecoloranddesign.com](http://reflectivecoloranddesign.com)

Internationally inspired design. Tailored client experiences.





# WHITE COLONIAL DREAM HOUSE



## FIRST IMPRESSION

The home's most distinctive feature is its harmonious connection to the outdoors. Generous windows frame garden views from the kitchen and family room, while thoughtfully designed outdoor living spaces extend the home's footprint into nature, creating a unique sense of peace throughout the property.

### “ IN THE HOMEOWNERS' WORDS

*We ended up flip-flopping the location of the refrigerator and reorienting the island. This felt like a huge change in the moment, but it really improved the layout.*



Dennis Mayer Photography

This beautiful colonial style home was constructed between 2019–2020. The original home, a classic ranch, was built in 1963. The homeowners bought the property in 2016 and began plans to construct their dream home. This home was designed in a traditional fashion with warmth and elegance throughout for their family. They enjoy family time and cooking both inside and outside. The combination of wood, marble, and the outdoors creates a calm and relaxing environment that allows for rest and creativity.



# HOME RESOURCES

**ARCHITECT** Nyhus Design Group

**BUILDER** RG Developments

**KITCHEN & INTERIOR DESIGN** Diane Hendrix, Reflective Color and Design

**LANDSCAPING** Michael Callan Landscape Architect

## THE KITCHEN

Cabinetry: Custom painted in Benjamin Moore Simply White, Plan It Cabinetry

Backsplash: Bianco Carrara by Artistic Tile, All Natural Stone

Bar counter: Sahara Noir Marble, DaVinci Marble

Butler pantry counter: Calacatta Borghini Marble

Island counter: Calacatta Oro Marble, Pietra Fina

Surrounding counters: All Natural Stone

## KITCHEN DECOR

Sinks: Shaw's Original and Native Trails, Decorative Plumbing Supply

Faucets: Rohl, Decorative Plumbing Supply

Hardware: Belmont Hardware

## APPLIANCES

Wolf range & hood, Sub-Zero side-by-side refrigerator/freezer & refrigerator drawers, Bosch custom panel dishwasher, Sharp microwave drawer and Marvel ice maker, Legacy Appliances

## LIGHTING

Dining room pendant: Darlana Lantern by Chapman & Myers, Coast Lighting

Kitchen island pendant: Hollis, Lumens.com

## WINDOW TREATMENTS

Conrad woven shades fabricated by Rossetti & Dubrae

## DINING/LIVING AREA

Dining table: Custom, Cottage Industries Handcrafted Furniture

Dining chairs: Vintage, Chairish.com

Bespoke Swivel Chair: P. Tendercool

## ALONG THE WAY

Artwork: *Harbor Scene of Honfleur, France* by Artist C.H. Pollaci; *Paris Rooftops* by Artist Vianney

## STYLIST

Williams-Sonoma, Inc.

## FLORAL DESIGN

Blooming Vase Floral & Event Design

## VENDORS

Bonjour Bakehouse

StarVista Crisis Center

Handbags by UB Chic

Waffles & Honey Jewelry



## Orange Cream Cheese Cookies

1/2 cup butter (room temperature)

1/2 cup sugar

1-1/2 oz cream cheese (room temperature)

1 egg yolk

1 tsp vanilla

1 Tbsp frozen orange juice concentrate

Grated rind of one orange

1/4 tsp salt

1/4 tsp baking powder

1-1/2 cup sifted flour

## DIRECTIONS

Beat butter and sugar until light and fluffy. Beat in cream cheese and egg yolk. Add vanilla, orange juice concentrate and rind. Fold in flour, sifted with salt and baking powder. Chill dough one hour. Drop by small spoonful onto greased baking sheets. Bake at 350 degrees for 10 minutes.



"Good food and a warm kitchen are what make a house a home."



DECORATIVE  
**DPS**  
PLUMBING SUPPLY, INC.  
"Welcome Home"  
www.decorativeplumbingsupply.com



WAFFLES & HONEY JEWELRY  
HANDMADE IN SAN FRANCISCO

---




---

WWW.WAFFLESANDHONEY.COM  
INSTAGRAM.COM/WAFFLESANDHONEY

  
blooming  
vase  
FLORAL &  
EVENT DESIGN

---

Susie Costello      susie@BloomingVase.com

---

269 Primrose Road      650.344.5100  
Burlingame, CA 94010      www.BloomingVase.com

---

No preservatives. No fillers. No artificial flavors. Only the best ingredients!

BONJOUR  
BAKERYHOUSE

PERFECTLY  
PREPARED TREATS BAKED  
*just* FOR *you*

Visit us:      Follow us:

www.bonjourbakeryhouse.com      @bonjourbakeryhouse

1807 Howard Ave., San Mateo, CA 94401

WILLIAMS  
SONOMA  
CALIFORNIA

**UB CHIC**  
Handbags & Things

Usha N. Burns      415-203-3720  
3618 Sacramento St.      ushaburns@msn.com  
San Francisco, CA 94118      www.ubchicsf.com

SUE SUBBOTIN INTERIORS

Interior Designer - Sue Subbotin Riviello

Studio: (650) 315-2379

www.SueSubbotinInteriors.com

**daisy**  
Powered by  
HERMARYS

Experience the future of smart living with Daisy, powered by Hermary's. As we build on Hermary's trusted legacy, our experts continue to bring cutting-edge home technology—empowering, entertaining, and seamlessly integrating into your lifestyle with innovative design.

Smart Home | Lighting | Network | Audio | Video | Security | Shades | Home Theatre

Showroom, by appointment - 295 Kansas St. San Francisco, CA 94103

[daisyco.com/san-francisco-ca/](https://daisyco.com/san-francisco-ca/) | (415) 993-7600

850 Santa Cruz Ave.  
Menlo Park, CA 94025  
650.521.0778  
[derbymenlo.com](http://derbymenlo.com)

**derby**  
INTERIORS & DESIGN

Making your  
world safer

**DEA** SECURITY SYSTEMS

Since 1983

- Custom Smart Security System Integrators
- 24/7 UL Professional Monitoring
- Discreet & Elegant Installations
- White-Glove Service & Expert Support

Your Home. Your Security. Your Peace of Mind.

(650) 508-0199 office - 24 hours





## CRIPPEN & FLYNN

SINCE 1949

**Cremation**  
**Pre-Need Arrangements**

**Burial**  
**Memorial Services**

*Our Professional Services are Based  
Upon Your Individual Needs*

**Woodside Chapel**  
400 Woodside Road  
Redwood City  
**(650) 369-4103**  
FD879

**Carlmont Chapel**  
1111 Alameda de las Pulgas  
Belmont  
**(650) 595-4103**  
FD1825

[www.crippenflynn.com](http://www.crippenflynn.com)

## Professionals for Good.



Thank you, SolMateo, for your  
dedication to mental health.  
**It's so good.**

Proud supporters of the *Signature Kitchen Tour*

**LINDQUIST**  
**VON HUSEN**  
& **JOYCE** llp

Certified Public Accountants

[Lvhj.com/about](http://Lvhj.com/about)

## BUYING, SELLING, OR RELOCATING?

I can help you with that!



**ALEXANDRA  
STRAMBI**  
REALTOR®  
CalIRE #01047550

**C: 650.400.3501**  
[Alex.Strambi@cbrealty.com](mailto:Alex.Strambi@cbrealty.com)

**Proud member of the  
SolMateo Community.**

**COLDWELL BANKER REALTY**  
1427 Chapin Ave, Burlingame, CA 94010



## Jamie H. Duddy, M.F.T.

Individual & Family Therapy  
Divorce, Mediation & Custody Issues

1650 Borel Place, Suite 209  
San Mateo, CA 94402  
Phone: 650.655.2724  
[JDuddyMFT@gmail.com](mailto:JDuddyMFT@gmail.com)  
[www.JamieDuddy.com](http://www.JamieDuddy.com)





# STAR VISTA

Helping All Ages and Stages  
Through Life's Challenges

**Thank you for supporting SolMateo's 2025 Signature Kitchen Tour and StarVista's high-impact mental health services!**



**STAR VISTA**  
**CRISIS CENTER**

The Crisis Center provides crisis intervention and suicide prevention services for San Mateo County residents, including a 24-hour crisis hotline, mobile crisis response dispatch, and educational presentations to the community and schools.

**In crisis or need support in  
San Mateo County?**

**24/7 Crisis Hotline (All Ages)**  
**Call: (650) 579-0350**  
**or dial 988**

Founded in 1966, the Crisis Intervention and Suicide Prevention Center was the first program of the organization known today as StarVista.

The StarVista Crisis Center is accredited by the American Association of Suicidology and belongs to the Suicide Prevention Lifeline national network of crisis centers.







**LET'S TALK ABOUT REAL ESTATE**

Serving clients in the Mid Peninsula to achieve their goals. In the meantime, let's support Sol Mateo for all of the incredible work they do.

**EM**  
ELLEN MAZZONI

COMPASS

DRE# 00911540 650-464-2097 ellen.mazzoni@compass.com ellenmazzoni.com

# CHARMING EUROPEAN-INSPIRED RANCH



Dennis Mayer Photography



## FIRST IMPRESSION

The soft lighting and subtle palette of almond, ivory, and olive green evokes a feeling of warmth, yet maintains a serene, minimalist aesthetic. The space is both elegant and understated, offering a sense of tranquility.

This thoughtfully renovated ranch home was originally built in 1941 and reimagined in 2024. The homeowners' love for kitchens, gardening and entertaining drew their inspiration for the remodel from the TV show *For the Love of Kitchens*, a show representing deVol Kitchens from the English countryside.

They were very involved in the design, carefully selecting materials and furnishings they have collected along the way. The floors were stripped down to their natural state and coated with Bona "Raw" to keep the more rustic look. Inviting the presence of warmth and an aged European/English cottage feel which welcomes all the extended family for frequent gatherings.



IN THE HOMEOWNERS' WORDS

“

*Our choice of colors makes us smile and gives us the feel of sanctuary.*



# HOME RESOURCES

**ARCHITECT & BUILDER** Gehrels Custom Homes  
**KITCHEN & INTERIOR DESIGN** Carol Swanson, MFA, CKD

## THE KITCHEN

Cabinetry: Custom Shaker, Hayden Island Cabinetry  
Countertops: Marble, All Natural Stone  
Backsplash: Tile, deVOL Kitchens  
Paint: Benjamin Moore Slivered Almond and Hampshire Gray

## KITCHEN DECOR

Faucets: Perrin & Rowe, Rohl, Belmont Hardware  
Hardware: Yester Home and Rejuvenation  
Counter Stools: Pottery Barn

## APPLIANCES

Thermador stove, dishwasher & refrigerator, Sharp microwave drawer, U-Line beverage refrigerator, CG Appliance

## LIGHTING

Kitchen: deVOL Kitchens  
Stove sconces: Coast Lighting

## DINING/LIVING AREA

Furniture: Pottery Barn and Harvest Furniture

## ALONG THE WAY

Take a seat in the charming bay window seating area—the perfect place for a family cribbage game or sharing a meal.

## STYLIST

Hudson Grace

## FLORAL DESIGN

Sève Flowers

## VENDORS

Hudson Grace  
LL's Kitchen  
New Generation Vintage  
Suki's Honey Bees



## Parmesan Crisps

4 oz piece of Parmesan Reggiano cheese without rind  
1 Tbsp all-purpose flour  
1 tsp minced fresh thyme leaves  
1/2 kosher salt  
1/2 tsp fresh ground black pepper

## DIRECTIONS

Preheat oven to 350 degrees. Line two sheet pans with parchment paper. Grate cheese. Combine cheese, flour, thyme, salt and pepper in a bowl and mix well. Put level tablespoons of the mixture onto the prepared sheet pans, spreading each round into a 3-inch disk. Toss the mixture each time and scoop from the bottom of the bowl to be sure you get some flour in each spoonful. Bake in the middle of the oven for 8 to 10 minutes, until golden brown.

Cool on the pans for 5 minutes, loosen with a metal spatula, then cool completely on a baking rack. Serve at room temperature.

— Ina Garten, *Barefoot Contessa Foolproof*



"There's nothing like home-cooked meals to make the world feel right again."



SERVING THE BAY AREA FOR OVER 40 YEARS



**VISIT OUR 4 SHOWROOMS TODAY!**

San Rafael 530 W. Francisco 415.455.5363	San Francisco 228 Bayshore Blvd 415.550.8848	San Mateo 2612 S El Camino 650.340.2890	Mountain View 2039 W El Camino 650.691.6850
--	--	---	---



## Brand New Burlingame Home Offered at \$6,795,000

**ED STEPHENS**

(650) 208-1301

edstephensrealestate@gmail.com

www.EdwardStephens.com

CalBRE# 00462186



**COLDWELL  
BANKER**

## POOP PATROL

Got Poop? We Scoop!



**Laura Molinari**

650-333-2855

scout@pooppatrolrwc.com

www.pooppatrolrwc.com



*Lynnette Watterson*

110 De Anza Boulevard

San Mateo, CA 94402

(650) 342-6978 • Fax (650) 345-7578

lynnette@crystalcleaningcenter.com

www.crystalcleaningcenter.com



**Focused on You – and Your Home!**

Global Luxury Specialist  
GRI, CRS, SRES, e-Pro  
Certified Relocation Specialist

CalRE #01189127  
650-766-2424  
www.violetcguerra.com



Nov. 2021

Nov. 2022

*Nicole Cheever*  
Hair repair expert

Specializing in reversing scalp  
issues, hair thinning, and  
damage using advanced scalp  
microbiome-focused  
technology. Results in 90 days!

Scan the code for  
hair consultation  
and receive a  
complementary  
scalp treatment



or text 650-420-1977





**Dennis Mayer - Architectural & Residential Photography**  
 650-273-2277  
[www.dennismayer.com](http://www.dennismayer.com) - [dennismayer@gmail.com](mailto:dennismayer@gmail.com)

## LOCATION CUBED PROPERTY VALUATION GROUP

### Michael Tognotti—Principal Appraiser

Specializing in Real Estate Valuations for Charitable Gifting, Date of Death Valuations (for IRS returns), partnership and marriage dissolutions, Property Tax Appeals, litigation support and mortgage loan purposes. Valuations performed on all residential type properties from vacant land through Single Family and Multi-Family Apartments.

[appraisals@location-cubed.com](mailto:appraisals@location-cubed.com)

650.572.8258

P.O. Box 1004 San Mateo CA 94403



## FINE HOMES & BUILDERS INC.

650.207.9159

[info@sgfinehomes.com](mailto:info@sgfinehomes.com)

Cal Lic. 473751

[www.sgfinehomes.com](http://www.sgfinehomes.com)

## Set your student up for College Admissions Success!!



Peninsula  
 Scholars

Full-service admissions prep  
 and advisory counseling.

### Amy Grenier – College Admissions Coach

[aslgrenier@gmail.com](mailto:aslgrenier@gmail.com) • 415-350-8180

[www.peninsulascholars.com](http://www.peninsulascholars.com)

## BURLINGAME WOMEN'S CLUB



A place to connect, engage, and serve  
in the heart of Burlingame

For More Information on Membership & Rentals:  
<https://bwc94010.org>

Burlingame Women's Club  
241 Park Road, Burlingame, CA 94010



*We feel happy when we see people being happy through beautiful nails*



## Sarah Nail Salon

(650)548-5436

21 South San Mateo Drive San  
Mateo CA 94401



[marinerspoint.com](http://marinerspoint.com)



## TONY WARD CONSTRUCTION

LICENSE # 853599

2553 23<sup>RD</sup> AVE., SAN FRANCISCO, CA 94116  
415-596-1888

Matteoni  
O'Laughlin  
& Hechtman  
LAWYERS

Bradley M. Matteoni



848 The Alameda  
San Jose, CA 95126  
ph. 408.293.4300  
fax. 408.293.4004  
[bradley@matteoni.com](mailto:bradley@matteoni.com)

**kw** ADVISORS  
KELLER WILLIAMS

**KELLER WILLIAMS BURLINGAME  
SELLING HOMES THROUGHOUT  
THE BAY AREA, NAPA, AND  
SANTA BARBARA**

**MARISA  
WACHHORST**  
650.454.9697

**REALTOR®**  
DRE #01049436  
[Marisa.Wachhorst@KW.com](mailto:Marisa.Wachhorst@KW.com)  
[Marisa-Wachhorst.KW.com](http://Marisa-Wachhorst.KW.com)







DAVID HUNSAKER *Founder*

144 South B St. San Mateo, CA 94401  
cell 650.346.9382 / fogbird 650.458.0049  
david@fogbird.co / fogbird.co



Since 1993

*Alana's* Cafe

Breakfast • Lunch • Catering

1408 Burlingame Avenue, Burlingame, CA 94010  
(650) 348-0417 • info@alanascafe.com  
www.alanascafe.com





## MOLLIE STONE'S

CATERING.MOLLIESTONES.COM

John: Store Manager  
Mitsu or Chris: Assistant Store Managers  
1477 Chapin Ave.  
Burlingame, CA 94010  
Ph: 650.558.9992

Phil: Store Manager  
Mary: Assistant Store Manager  
49 West 42nd Ave.  
San Mateo, CA 94403  
Ph: 650.372.2828

## ORLANDO TRUJILLO PAINTING CONTRACTOR INC.



ORLANDO JR.

[www.orlandotrujillopainting.com](http://www.orlandotrujillopainting.com)

Residential • Commercial  
Fully Insured • Free Estimates

6 S. Amphlett, San Mateo 94401  
OTpaint@gmail.com • Lic. 435235  
Tel: 650-579-0707



## Lynch Electric

(650) 594-1054  
1160 Industrial Rd Ste 18  
San Carlos, CA 94070



THE HOME TEAM

[www.thehometeamdbt.com](http://www.thehometeamdbt.com)



(650) 763-1740  
1781 El Camino Real  
Millbrae, CA 94030



FORM+ONE DESIGN - 415.819.0304

## SPECIAL THANKS TO OUR HOUSE CHAIRS

Sara Furrer & Michelle Taylor, Nevada Ave.

Diane Elcan & Judy Kell, Sierra Dr.

Julie Sautter & Cynthia Tognotti, El Arroyo Rd.

Alexandra Strambi & Lucie Kober, Hillsborough Blvd.

Nancy Minnig & Sue Riviello, Costa Rica Ave.

## IZMIRIAN ROOFING AND SHEET METAL

Providing  
Comfort and  
Shelter to  
Peninsula  
Residents  
Since 1924

HEATING ■ AIR CONDITIONING  
INDOOR AIR QUALITY

299 S. Railroad Ave. • San Mateo  
650-342-3200 • [www.izmirian.com](http://www.izmirian.com)

CA CONTRACTOR LICENSE #277624





3DAYBLINDS®  
YOU'LL LOVE THE TREATMENT

PROUD SPONSOR OF SOLMATEO

Custom Blinds, Shades, Shutters and Drapery



**Buy One Get One 50% Off\***  
on Custom Blinds, Shades and Drapery

Schedule Your FREE In-Home Design Consultation

**Call 1-866-362-7603**  
visit [www.3dayoffer772.com](http://www.3dayoffer772.com)  
or SCAN QR Code



WE DESIGN



WE MEASURE



WE INSTALL



YOU RELAX®

\*Offer valid on 3 Day Blinds brand products only, excluding shutters and special orders. Buy 1 qualifying window covering and receive the 2nd qualifying window covering of equal or lesser value at 50% off! Offer excludes installation, sales tax, shipping and handling. Not valid on previous purchases or with any other offer or discount. **Offer Code BGXB. Expires 12/31/25.** Images displayed are intended for inspiration only, products may not be available in/with the exact operating system, style, material, pattern, color or options shown. Check with Design Consultant for availability. State Contractor and Home Improvement Licenses: Arizona 321056. California 1005986. Connecticut HIC.0644950. New Jersey 13VH09390200. Oregon 209181. Pennsylvania PA107656. Tennessee 10020. Washington 3DAYBDB842KS. County Licenses: Nassau County, NY H01073101. Rockland County, NY H-12401-34-00-00. Licensed through Great Windows Services, LLC: Virginia 2705172678. West Virginia WV061238. Various City Licenses Available Upon Request. © 2025 3 Day Blinds LLC.



# DELIA CONSTRUCTION

For over 30 years, DELIA Construction has proudly served Peninsula clients, including organizations like SolMateo. Our residential construction and custom remodeling services consistently exceed client expectations through a commitment to integrity, craftsmanship, and reliability. Visit [www.deliacreation.net](http://www.deliacreation.net) or scan the QR code below to learn how we can assist with your next project.

