

SOLMATEO

Shining Light on Mental Health



SIGNATURE KITCHEN TOUR

Friday, May 19 • 10AM – 3PM

Self-Guided Tour of Five Extraordinary Homes

MEDIA SPONSOR

PUNCH
SPIRIT OF THE PENINSULA

PROCEEDS BENEFIT

Mental Health Association of San Mateo County
StarVista's Crisis Intervention & Suicide Prevention Center



Passionate About Home Improvement

DELIA Construction, serving Bay Area residential clients for over 30 years with residential construction and custom remodeling services. Our passion is home building that blends integrity, craftsmanship and reliability into every project. We provide our clients with superior quality and results that exceed expectations.



T 650.483.3359 | E don@deliaconstruction.net
www.deliaconstruction.net | San Mateo, California



TABLE OF CONTENTS

- Table of Contents & Who We Are 1
- In Memoriam [2](#)
- Welcome [3](#)
- Who We Support: StarVista [4](#)
- Who We Support: MHA [5](#)
- Tour Home: Modern Makeover, Hillsborough [8](#)
- Tour Home: Craftsman Bungalow with ADU, Burlingame [14](#)
- Tour Home: Dutch Colonial, San Mateo Park [22](#)
- Signature Kitchen Tour Sponsors:
 - Corporate [28](#)
 - SolMateo Members, Family and Friends [29](#)
- In Memoriam/In Honor Donations [29](#)
- Tour Home: Tudor Estate, Hillsborough [30](#)
- Tour Home: Renovated Classic Rancher, Hillsborough [34](#)
- SolMateo Members. [Back Cover](#)

WHO WE ARE

SolMateo is a volunteer group working to support our local community with issues surrounding mental health. By raising money and awareness for organizations that provide essential services like suicide prevention hotlines, emergency housing for homelessness, and counseling services, we strive to help our neighbors obtain important resources in times of need.

Proceeds raised from the Signature Kitchen Tour will help fill the funding gap for essential local mental health organizations including StarVista’s Crisis Intervention and Suicide Prevention Center and Mental Health Association of San Mateo County.



MHA
 Mental Health Association
 of San Mateo County

In Memoriam
Marianne Michael Arbeed

Our community will miss Marianne.

She volunteered and supported many organizations and the local schools, making many friends along the way. SolMateo is grateful for her years of support.

She will be long remembered for her kindness, warmth and all the friendships she made.



Marianne Michael Arbeed
1966-2023

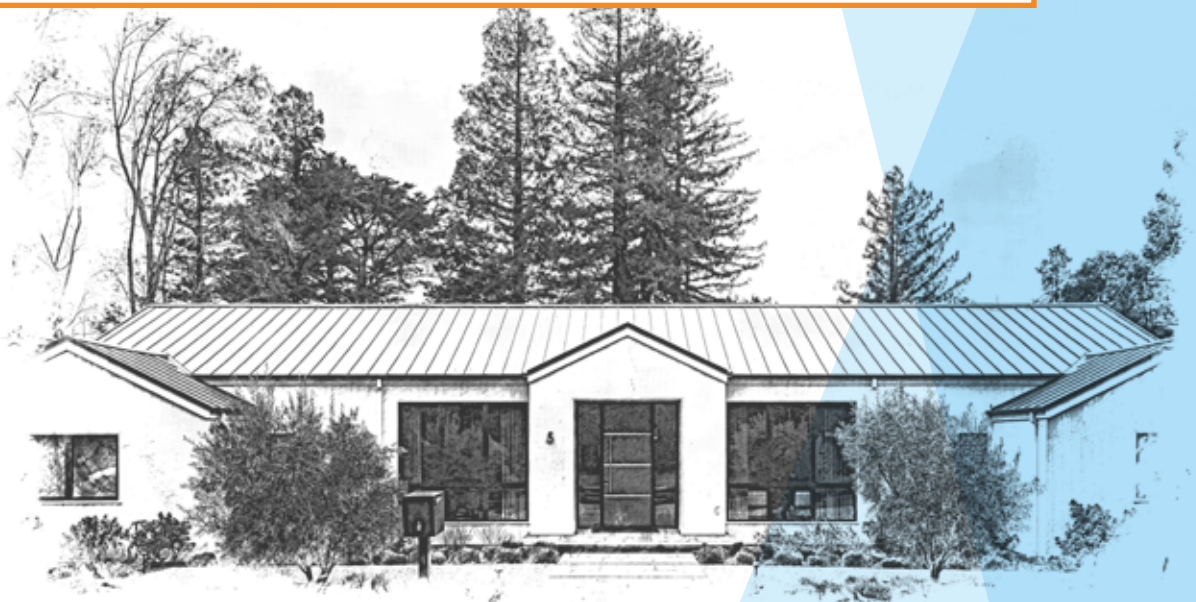
WELCOME

It is once again time to open the doors to spring and the SolMateo Signature Kitchen Tour. Epic storms have been replaced with glorious sunshine. Signs of renewal are everywhere, making it the perfect time to shine light on mental health in San Mateo County.

This year we are proud to celebrate our 41st Signature Kitchen Tour. An event that is only possible with the generous support of our homeowners, Event Sponsors, Community Partners, SolMateo members and of course YOU! Thank you for attending this year's event. We are excited to open the doors to five unique homes including a craftsman, Dutch colonial, Tudor and two different takes on modern ranch.

Home is not only a place, it's a feeling. Each of our homeowners has created spaces that reflect their ideas of home. We hope that you are inspired by not only the designs of the homes, gorgeous landscapes and gracious vendors, but the cause for which the tour was all started.

From all of us at SolMateo, thank you for helping us take care of our loved ones and neighbors. By shining light on mental health, they can now obtain important resources in times of need.





STAR VISTA

StarVista thanks all of you who opened your hearts to support the 2023 SolMateo Signature Kitchen Tour.

StarVista Crisis Center

The Crisis Center provides suicide intervention services and programs for San Mateo County residents, including a 24-hour crisis hotline, mobile youth crisis response team, online and text teen crisis support, and educational presentations to the community and schools.

In crisis or need support in San Mateo County?



24/7 Crisis Hotline (All Ages)
Call: (650) 579-0350

Teen Crisis Services

MON-FRI, 4:00 PM-10:00 PM PST

Teen Text Line: 650-747-6463

Teen Chat/Website: www.sanmateocrisis.org



MENTAL HEALTH MATTERS 2023

Sunday, May 21, 2023

9:00AM-1:00PM | Seal Point Park

Mental Health Matters: A Community Wellness Fair and 5k Event is a mental health-focused event that brings together all walks of life for a day filled with fun, learning, and wellness.

Register Today: www.star-vista.org/mhmatters





MHA

Mental Health Association
of San Mateo County

Empowering People to Create Their Best Life



**Thank you SolMateo for 47
years of helping our clients
have a place to call home.**



DISEN CAI

REAL ESTATE GROUP

San Mateo County's
#1 Team
in Units Sold*

\$1 Billion+

In Homes Sold Since 2015

WHO YOU WORK WITH MATTERS



DISEN CAI
FOUNDER | Realtor®
10-Year Real Estate Professional
Former Competitive Archer



NANCY JWEINAT
Realtor® | Listing Manager
Former Social Work Professional



LENA YIN, PT
Realtor® | Listing Manager
Former Hospital Case Manager



JOSEPH DAY
Realtor®
Former Professional Chef



MICHAEL MASON
Realtor®
Former Early Education Professional



TIFFANY TISEN, Esq.
Realtor® | Client Success Manager
Former Public Defender



LAILAH MORRIS, Esq.
Realtor® | Listing Specialist
Former District Attorney



JOSHUA LEE, DPT
Realtor®
Former Doctor of Physical Therapy



MERAL KACAR
Realtor® | Showing Specialist
Former English Education Professional



SABINE DILLON
Realtor®
25-Year Real Estate Professional



VANESSA CHU
Realtor® | Showing Specialist
Former Hospitality Professional



LUCA JELMINI
Realtor®
Former Retail Sales Professional



RICKY LEE
Realtor®
Former Chinese Language Professional

We offer fluent service in Mandarin, Cantonese, Turkish, German, Arabic, & English.

650-622-2156 | hello@disencai.com



WWW.DISENCAI.COM



Congratulations SolMateo

on 41 years of kitchen tours
and 47 years of supporting
those in our community struggling
with mental health, homelessness
and thoughts of suicide

Donna and Eric Colson

MODERN MAKEOVER, HILLSBOROUGH



Dennis Mayer Photography

This 1974 ranch style home was completely transformed in 2021, with bright white vertical planking and a gray standing seam metal roof for this young, active family. Conceived and implemented by TRG Architecture + Interior Design, the modern exterior transitions into a bright, cheerful interior, inspired by the Mid-Century Modern aesthetic. From the time you pass through the lustre finish Vermont Slate blue front door with horizontal steel banding and an oversized vertical steel pull, you will be in awe.

The open concept living area is drenched in natural light and the newly raised ceilings in the great room, den and dining room enhance the sense of space. Among the furnishings sourced by the interiors team, a pair of Venturi Accent chairs from Lulu and Georgia in the den complement the floating, rift-sawn oak shelving and built-in cabinets. A beautiful watercolor-like rug in shades of blue echo those in Sydney's Bondi Icebergs Pool wall art and says G'day to a cozy, comfortable room.

The three-arm, "Highwire" chandelier in the dining room gives a feeling of night sky against the Benjamin Moore's Alfresco blue-paneled wall that grounds the room. A 10-by-four-foot solid walnut dining table crafted by one of TRG's local artisans features a distinctly Mid-Century Modern, angled base. A collection of iconic Mid-Century dining chairs in curving midnight leather softens the rectilinear lines of the room.

Walking down the hall, peek in at the powder room with its bold geometric, blue and brass wallpaper from Innovations. The floating, rift-white-oak vanity and backsplash offer a quiet backdrop for the brass, wall-mounted faucet by Kohler and

porcelain vessel sink by Duravit. The single brass pendant by Visual Comfort adds warmth and drama to the space.

Who will ever think doing laundry is a chore in this bright and happy space? A stackable Electrolux washer/dryer is enveloped in custom cabinetry, painted a playful green called Steamed Spinach by Benjamin Moore, is topped in a clean and bright white quartz by Pental. Retro "Surf Aqua" cement tiles from Villa Lagoon Tile make a statement on the backsplash while giving a nod to the home's 70's beginnings.

IN THE HOMEOWNERS' WORDS:

What part of the kitchen makes you smile every time you walk in?

"We love the blue island and open oak shelves, and we love all the natural light. We also love how the accordion door allows us to look out at the pool and yard—and feel like we are outside even when we are inside."

The great room and kitchen come together and provide a cohesive space for the family to gather and offer a sweeping view of the pool and spacious backyard. A row of skylights brings abundant brightness in from above and leads your eye to an impressive wall of Bardiglio Marble from DaVinci Marble, which surrounds both fireplace and TV while beautifully anchoring the room.



The spacious and functional kitchen features an 8-foot island painted a combination of Benjamin Moore's Marine Blue and Gentleman's Gray and topped with a Calacatta Marble look-alike From DaVinci Marble that is made of porcelain and will not stain or etch. A secondary sink makes it convenient to pitch in and help the main chef with meal prep. In addition, handsome leather high-back counter stools offer comfy seating for friends and family who prefer to simply keep the cook company. The glossy white Tom Dixon pendants above, with their textural, hand-beaten brass interiors, provide ample task lighting. Cubed mosaic Escher tiles from Fireclay Tile fill the walls above the Wolf range and surround the main sink. The pattern is reminiscent of the wallpaper in the powder room. The hood is a simple, clean-lined, paneled cube, painted to match the cabinetry below. Floating rift-white oak shelves, like those above the counter on the adjacent wall, offer easy accessibility to dishes and glassware. The Sub-Zero refrigerator, freezer, and wine refrigerator are concealed behind integrated cabinet panels to blend in with the rest of the cabinetry, as are the two Bosch dishwashers. One of the family's favorite remodel decisions was the addition of a second full-sized dishwasher.

The entire wall of the great room consists of a transom-topped, 8-foot-tall accordion door that can be pushed away to remove the barrier between inside and out, inviting you to step into the back yard. The tranquil but playful interior vibe and the homeowners' clear love of blue in every shade culminate with a large swimming pool that is front and center of the backyard—perfect for this family with a passion for all things aquatic.

STAGING

Anthem, San Francisco
 Andra Norris Gallery
 Leslie Lamarre, TRG Architecture + Design

FLORAL DESIGN

Blooming Vase Floral & Event Design

VENDORS

KAZKA
 LL's Kitchen
 The Posh Moon

HOME RESOURCES

Architect: TRG Architecture + Design
Kitchen Design: TRG Architecture + Design
Contractor: Post and Lintel Construction



ANDRA NORRIS GALLERY

1107 Burlingame Ave
 Burlingame, CA 94010 USA
 tel: 650-235-9775
 info@andranorrisgallery.com
 www.andranorrisgallery.com

ANTHEM
 S A N F R A N C I S C O

1208 Donnelly Ave, Burlingame, CA 94010
 @antheminteriors | www.anthemsf.online



blooming vase
 FLORAL &
 EVENT DESIGN

Susie Costello susie@BloomingVase.com

269 Primrose Road 650.344.5100
 Burlingame, CA 94010 www.BloomingVase.com





Scan Here
for More

MaryAnn Teixeira *Real Estate*

Representing the Finest Properties in
Belmont, San Mateo, & Burlingame

www.MaryAnnT.com | 650.399.5505

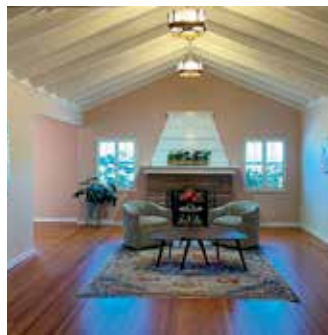
DRE# 01518767

COMPASS

Compass is a licensed real estate broker licensed by the state of California and abides by equal housing opportunity laws. All material presented herein is intended for informational purposes only. Information is compiled from sources deemed reliable but is subject to errors, omissions, changes in price, condition, sale, or withdrawal without notice. No statement is made as to accuracy of any description. All measurements and square footages are approximate. This is not intended to solicit property already listed. Nothing herein shall be construed as legal, accounting or other professional advice. © 2021 Compass Real Estate Brokerage.

BURLINGAME WOMAN'S CLUB

Just Renovated & Available for Rentals



Located in the heart of downtown, Burlingame Woman's Club
offers unique event space for any occasion, including:

Corporate Events • Group Meetings • Recitals & Performances
Parties & Celebrations • Memorial Services • Rehearsals & Weddings

The Burlingame Woman's Club is available for rental year-round, seven days a week.
Special pricing is available for nonprofit organizations.

For information about availability, please email us at: bwc94010@gmail.com
Pricing and more information available on our website: BWC94010.org/Rentals

HOMES

Architecture
Interiors
Landscapes



We renovate great old houses,
and we build striking new houses.
Our tastes are your tastes.

Our strength is our experience and
our perseverance to keep your vision intact
until your project is complete.

DTA Dreiling Terrones **Architecture** Inc.
Architecture | Infrastructure | Environments

Burlingame | Healdsburg

650 696 1200
www.dtbarch.com



LISA KARSON
G R O U P

Serving the Peninsula and Beyond

Hillsborough, Burlingame, Millbrae, San Mateo...

Golden Gate

Sotheby's
INTERNATIONAL REALTY

Top Producer

650.759.4644

lisakarsonrealestate@gmail.com

Cal BRE# 01775831

LisaKarson.com

CRAFTSMAN BUNGALOW WITH ADU, BURLINGAME



Dennis Mayer Photography

This charming 1940 cottage has been completely transformed into a Craftsman Bungalow. It was remodeled in 2020 and has a landscaped drought-tolerant front garden and stone pathway leading to the front door, painted in a smoky, deep green echoing the surrounding foliage. Its shingled exterior is a warm, brown earth tone.

The feeling of bringing the outdoors in overwhelms you as you step inside, with engineered European Oak wood floors throughout the home. You will notice a dramatic cantilevered tongue and groove ceiling and dormer window, allowing natural light to cascade in. The view to the backyard's lush greenery is framed by multi-slide Kolbe glass doors. The living room's seating area with an L-shaped sofa and over-sized leather ottoman from Room and Board invite you to stay and enjoy. Natural walnut cabinetry and open shelving, custom designed by Architecture Allure, provide a backdrop for the family's collection of landscape photographs. A large oil painting by Benjamin Guffee in moody blues and grays offers a contrasting view of nature's turbulent sea.

To your right is a cozy family room with a large wall-mount television and built-in cabinets. This is a great place to gather for movie or game night, as a tall-carved wood giraffe from South Africa looks on.

As you enter the kitchen and dining area, a playful and airy Moooi (Dutch for beautiful) light fixture greets you, floating

above the Stickley walnut dining table surrounded by iconic Eero Saarinen chairs. A built-in sideboard offers extra space when entertaining and is backed in hand made and glazed Wide Hex Twist tile, with a custom 3-color pattern installed vertically, from Heath Ceramics. Decorative art pieces adorn the shelves, including a vibrant blue glass Challah plate from Israel.

IN THE HOMEOWNERS' WORDS:

What part of the kitchen makes you smile every time you walk in?

“I love the movement of the tile in the backsplash.”

“The lighting adds a sense of warmth to the space that I really like.”

This modern kitchen features a wall of custom cabinets designed by Architecture Allure and fabricated by Ralph King Cabinetry. The matching angular hood over the Thermador glass ceramic induction cooktop creates a sleek, integrated look. The island base is natural walnut topped with Caesarstone Quartz in Fresh Concrete and provides ample prep area and functionality. Three bar stools with saddle-like white seats from Design

Within Reach invite guests to sit down and relax. The wood tones continue to the set of shelves adjacent to the main Shaw porcelain sink, which overlooks the soothing outdoor water feature by Stone Forest. Who knew doing dishes could be such a Zen experience? Completing the calm outdoor ambiance is the leaf-like Heath Ceramics backsplash, repeated from the dining area.

As you exit the home, you will be transported to the secluded secret garden. A firepit and hot tub are protected by a wall of trees and the patio is perfect for entertaining, with built-in bench seating around the cement and teak table from Crate and Barrel. Industrial gunmetal Tolix Marais chairs from Design Within Reach completes the seating.

The property also has an ADU (Accessory Dwelling Unit) offering additional living space. Is it an office for a busy couple who often work from home? Is it a TRX suspension training gym? Or is it a broadcast Zoom studio, complete with an authentic "On Air" light from Markertek? It's all that and more! This home has surpassed its mid-century roots and is ready to stay planted for years to come.



STAGING

Robert Buelteman
Hudson Grace

FLORAL DESIGN

Sarah Padilla Designs

VENDOR

Julie B Studio

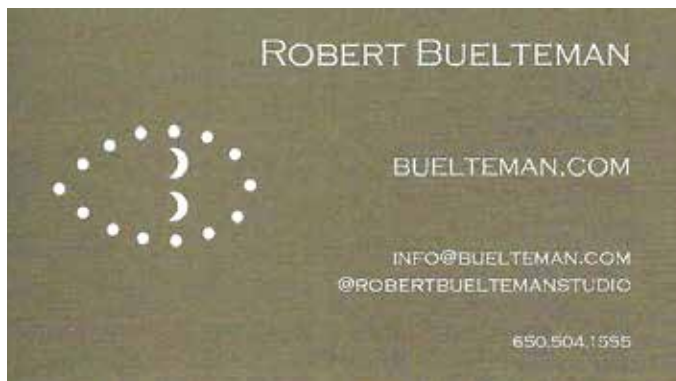
HOME RESOURCES

Architect: Architecture Allure, Inc.
Kitchen Design: Heather Roehl, Architecture Allure, Inc.
Contractor: J. Sullivan Construction

IN THE HOMEOWNERS' WORDS:

What did it mean to have the right home built for you?

"We were so grateful that we had a wonderful team to help us build our home. If we had to do it all over again, we would work with exact same team which we know it's not that common in the construction space. We hope by participating in the tour we can inspire others who have a similar lot size as ours to consider how they may be able to maximize the space that they have, and also to see how an ADU can be thoughtfully integrated into a rear yard setting."





Transform Your Space Today.

J. Sullivan Construction specializes in custom home builds on the Peninsula.

Visit JSullivanConstruction.com or send inquiries to justin@jsullivanconstruction.com to learn about making your custom home dreams a reality.



jsullivanconstruction.com



KRISTEN RUDGER
LANDSCAPE DESIGN



*Creating beautiful outdoor living spaces on the
San Francisco Peninsula for over 15 years*

WWW.RUDGERLANDSCAPES.COM
650-576-1935



@kristenrudgerlandscapes



Kristen Rudger Landscape Design



RALPH KING
FURNITURE CABINETS

Specializing in custom cabinetry since 1998

Now at our new location:

100 S. Linden Ave.

South San Francisco, CA 94080

Ralphkingcabinetry.com

415.822.5847



WINGES
ARCHITECTS

Jerry L. Wings, AIA, LEED-AP
jlw@wingsaia.com 650-343-1101
houzz.com/pro/wingsaia



**What Home
Means to Me**

“Home means a safe haven; a cocoon; a place of comfort where you can truly be your authentic self and thrive. While designing a home, I not only take into account aesthetics, but the emotional and lifestyle needs of a person/family. Design can change lives, as environment is such an important part of one’s existence and well-being.

—SSR



ALLWOOD CONSTRUCTION

Building with a Standard of Excellence

650 366 9521

www.AllwoodConstruction.com

Licence # 380075 - Est. 1979





Colleen Dowd Saglimbeni
INTERIORS

SAN FRANCISCO BAY AREA
INTERIOR DESIGN
CDSINTERIORS.COM



VF8

Embrace the future of Driving

Experience the state-of-the-art design combined with unrivaled interior space from the renowned Italian design firm, Pininfarina.

Built for the ultimate driving experience, the VF 8's Smart Services and Advanced Driver Assistance System excite every journey.

Moreover, with VinFast's extensive 10-year/125,000-mile vehicle and battery warranty, owning an EV has never been easier.



Baccarat



Kerns
Fine Jewelry

214 Lorton Avenue, Downtown Burlingame
650.348.7557 - kernjewelers.com

DUTCH COLONIAL, SAN MATEO PARK



Dennis Mayer Photography

This prim and proper 1912 home screams tradition on the outside and sophisticated entertaining on the inside. As you ascend the brick steps to the glossy black front door, framed by leaded diamond patterned glass windows, prepare to be wowed.

The entry hall has style in spades, Kate Spade that is. Once inside, look up to a flush mount brass KS light fixture, reminiscent of a vintage crystal brooch. The black and white Carrera marble harlequin floor is the stepping off point to the kitchen, dining room and sizable living room. An animal print runner lines the stairway to the second floor and the walls are covered in an Anna French Bridle wallpaper.

The light filled living room features several heirlooms: an 1870's carved walnut Victorian chest from the homeowner's maternal grandmother and an antique hand-painted screen on Chinese newspaper dating to the late 1800's from her maternal Great Aunt. In contrast to these treasures from yesteryear is the iconic Petite Friture Vertigo Pendant fixture by Constance Guisset, reminding one of a floppy sunhat. It's made of fiberglass with polyurethane ribbons. The fireplace is surrounded by shelving and built-in cabinets and an Asian influenced area rug sits atop the home's original white oak floors with mahogany inlay.

Across the hall, the formal dining room is the setting for special dinners with soft lighting provided by the brass spine-like wall

sconces with shades from Coast Lighting and the beautiful Versailles Black Lacquer and Black Shade chandelier. Asian botanical influences are seen in the Bird and Blossom Chinoiserie Wallpaper by Ronald Redding and Bamboo woven wood blinds complete the look.

Before entering the dramatic black and white kitchen, peek into the charming breakfast room filled with natural light from the bountiful black framed windows and French doors leading to the back patio. Notice the narrow roman shades over the windows on either side made of Dancy fabric in Onyx by Calico in Burlingame.

As you enter the kitchen, your visual senses will be overwhelmed. The pair of Rustic Farmhouse Pendant Crystal Raindrop Chandeliers from Amazon above the large center island twinkle and catches your attention. An iconic brass cable car bell is a family favorite and helpful in calling everyone to gather. The island is topped with Eclipse granite from Brazil in jet black and white, a dramatic contrast to the rest of the kitchen's Empira White Caesarstone. Black Indonesian Rattan bar stools tuck under the island and are upholstered in a Chinoiserie Dragon Tiger print fabric, Kathmandu-Onyx. The glossy white perimeter cabinets are the perfect backdrop for the intricate Estrella Silver Blend Glass Mosaic tile. Featured behind the Wolf six-burner cook top is a custom built stainless and banded hood from Vent-A-Hood. The kitchen's pièce de résistance is a large oxidized copper art piece by Gregory Clark. The red tones in the art are similar to

the knobs on the cooktop. He personally delivered it to the home to be sure it had an appropriate place to hang.

Leaving the kitchen, you descend into the family room. A petite powder room is on your left and roars to life with tigers on the wallpaper and a playful gold lion head sculpture facing the door. An entertaining wet bar features a brushed nickel Native Trails sink and hexagonal Shinju Crest hexagon tile by Lunada Bay. The large fireplace is surrounded with Namibia Series, Sunset Bronze Crescent tile and a Sandalus leathered quartzite hearth, creating a very textured look. True to the saying, 'every room needs a touch of black', this homeowner has used it throughout to create drama and draw the visitor's eye to their many treasures.

Stepping out to the pool area, you see a graceful Mayten tree offering some shade on the brick patio, raised vegetable beds and surrounding native plants, showing promise of a spring bounty. Imagine preparing dinner in the outdoor kitchen and then gathering around the brick fireplace for a cordial and conversation, honoring the roots of this historic home.

**IN THE
HOMEOWNERS'
WORDS:**

**What part of the kitchen
makes you smile every
time you walk in?**

"My two favorite parts about the kitchen remodel are being able to see the backyard from the entrance hall and see into the family room from the kitchen. The old floor plan had a dark hallway that blocked light to the entry, separated the family room from the kitchen and obstructed the view to the backyard. In removing the hallway, the kitchen area increased approximately 30% and the ceiling was raised to the original 10' height."

"A surprise detail in the kitchen is the dragon! The island stone has a dragon's head running lengthwise that is reminiscent of the Chinoiserie theme throughout the house."



STAGING

Kerns Fine Jewelry
Gabrielle Martin

FLORAL DESIGN

Henry's Place

VENDORS

Hydration Station
The Lexie Lou Collection
Sibby's Cupcakery
Raffle

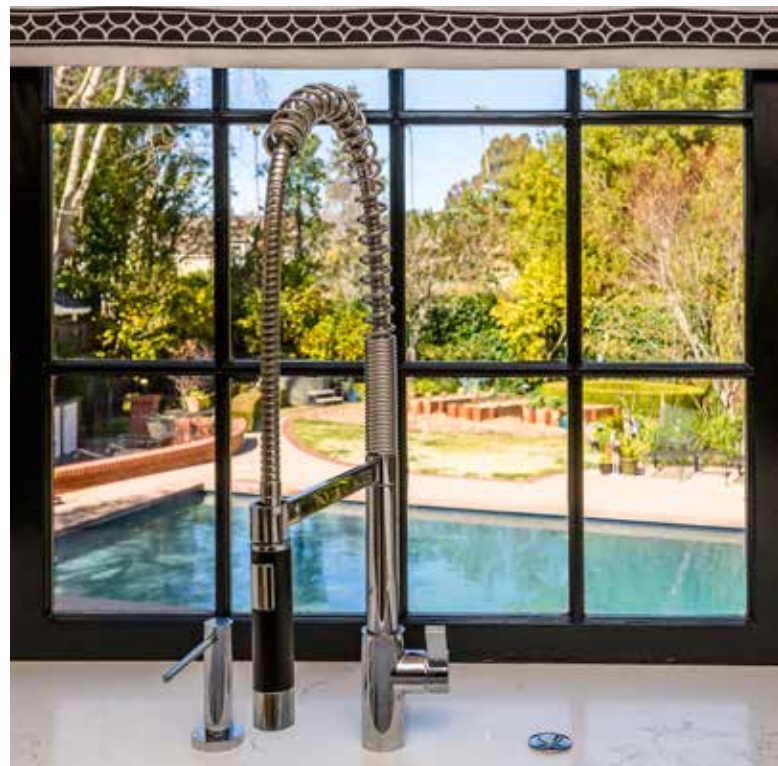
HOME RESOURCES

Contractor: Gordon A. Kullberg & Son

Architect: Form + One

Interior Design: Gabrielle Martin Design

Countertops: All Natural Stone





What Home Means to Me

“Home is where I feel safe and belonging, involving the people, memories and spaces I enjoy returning to regularly. To me, home can be ever changing and even multiple places at once. I believe it has a unique meaning for everyone depending on the situation.

—GK

Edward Jones®

> edwardjones.com | Member SIPC



Demo the kitchen. Go tour the dream college. We can help you get to those moments that matter.



Erin Sinclair, CFP®
Financial Advisor
411 Borel Avenue
Suite 505
San Mateo, CA 94402
650-343-0700

MKT-5894L-A-A1 AECSPAD

ANDERSON YAZDI

LLP

HWANG MINTON + HORN

Anderson Yazdi Hwang Minton + Horn LLP is one of the largest Trusts & Estates law firms in California serving individuals, fiduciaries and related entities. We deliver sophisticated advisory and litigation services to a diverse base of high net worth clients, on a range of U.S. and international matters.

We are proud to support the
Sol Mateo Signature Kitchen Tour

350 Primrose Road • Burlingame, CA 94010
650.212.5900 • www.andersonyazdi.com

COMPASS

Personalized Mid-Peninsula Real Estate

“As an ongoing supporter of SolMateo, I am proud to be a contributor to this year’s 41st Signature Kitchen Tour. Please join me in supporting this vital organization, dedicated to assisting our local community with issues surrounding mental health. Proceeds benefit Star Vista and the Mental Health Association of San Mateo County.”

To learn more about SolMateo, make a donation and/or to volunteer, please visit SolMateo.org”



DEBBIE ELOWSON

650-867-2217
debbie.elowson@compass.com
DeborahElowson.com

DRE # 01757074
COMPASS



Stephanie O’Rourke
landscape designer

CA Lic. #777808
1345 Howard Ave, Suite 203
Burlingame, CA 94010
650-347-2499
stephanie@landscapereflections.design

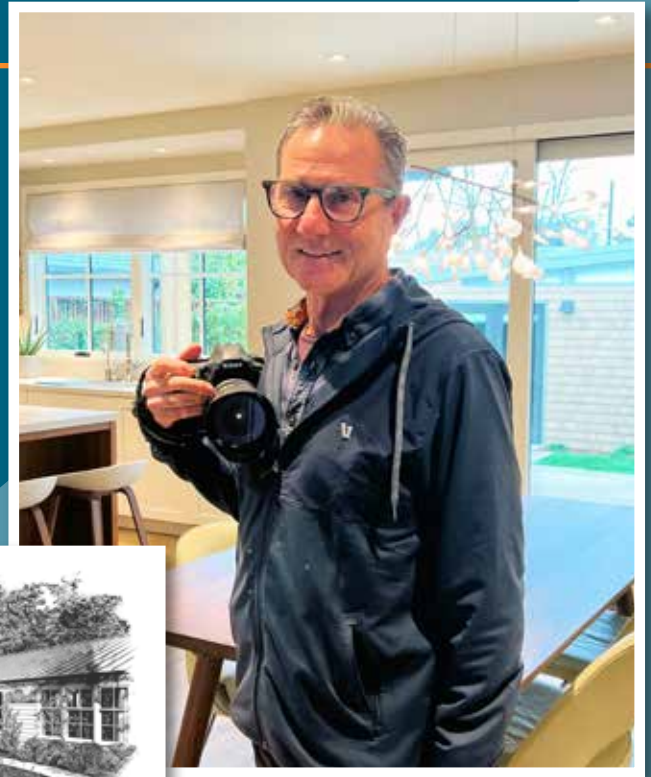
Que SeRaw SeRaw
fresh, fast and flavorful

Thank you SolMateo
Keeping our community
happy and healthy!!

1160 Capuchino Avenue
Burlingame, CA. 94010
650-348-7298
www.queserawseraw.com

Thank you, Dennis!

Dennis has been supporting SolMateo for many years, by donating his time and expertise to photograph the outside and inside kitchens of the homes on our Signature Kitchen Tours. We cannot begin to thank him enough for his generosity and kindness.



Dennis Mayer - Architectural & Residential Photography
650-273-2277
www.dennismayer.com - dennismayer@gmail.com



1.8 Acre Building Site in Hillsborough

This one-of-a-kind building site is perhaps the last developable parcel of this size that exists within the town of Hillsborough. Completely level, there are majestic heritage Oaks and Redwoods. Behind the original stonewall, there is absolute privacy and the perfect location to build the estate of one's dreams. Subdividable, there is also huge potential for development and profit.

Offered discretely for \$14,990,000 and destined to be priceless

210uplands.com

ED STEPHENS
(650) 208-1301
edstephensrealestate@gmail.com
www.EdwardStephens.com
CalBRE# 00462186



WHERE YOU PRINT
colorprint
MAKES A DIFFERENCE

Every Quarter Colorprint Donates 25% of Profits to
Local Charities Helping Kids and Families.

650.697.7611 • www.colorprint.com

2023 SIGNATURE KITCHEN TOUR SPONSORS

Corporate Sponsors

SILVER — \$5,000



BRONZE — \$2,500

Donna and Eric Colson



Benefactor — \$1,500

Allwood Construction Inc.
Dreiling Terrones Architecture Inc.
Kerns Fine Jewelry
VinFast

Patron — \$750

Anderson Yazdi Hwang Minton +
Horn LLP
Burlingame Woman's Club
Debbie Elowson, COMPASS
Ed Stephens, Coldwell Banker
Mary Ann Teixeira, COMPASS

Supporter — \$350

Art Attack!
Donna Marie Baldwin, COMPASS
Jamie H. Duddy, M.F.T.
Edward Jones, Erin Sinclair
Pandy Garvic, COMPASS
The Harbor Group, COMPASS
Hunter Douglas Gallery by Rebarts
Interiors
Izmirian Roofing & Sheet Metal
Landscape Reflections
J. P. Lindstrom, Inc.
Ellen Mazzoni, COMPASS
Judy Meuschke, COMPASS
Christina Ng, COMPASS
Outfit
Que SeRaw SeRaw, Inc.
Ralph King Furniture & Cabinetry, Inc.
Kristen Rudgar Landscape Design
Ellis A. Schoichet AIA, EASA
Architecture
Studio Shop Gallery
Raziel Ungar Team, COMPASS
Winges Architects, Inc.

Friend — \$200

@BySauts by Alex Sautter
Alana's Café
Baywood Private Wealth
Management
Christian Huebner Interiors, Inc.
Crystal Cleaning Center
Ladera Garden and Gifts
Peninsula Scholars
Pam Shaffer, Kleebauer Properties
Smith Integrative Oncology
Sue Subbotin Interiors
Michelle Taylor, Beautycounter
The Write Invite, Marian Sosnick

Members, Family & Friends Sponsors

Silver

Cindy and Scott Thompson

Bronze

Anonymous

The Cittadini Family Fund

The Hirth Family Foundation

Wilson Leung and Kai Yee Lee

Cathy and Tom Maloney

Patron

Norman and Laurel Book

Kay and Larry Coskey

Kristina and Victor Lo

Robert J. and Marion E. Oster

Garrett and Jenny Smith

Sponsor

Mindy Carr

Khristine Holterman

Rick and Judy Kell

Ann Malouf

Alexandra Strambi

Friend

Jacque Bigelow

Diane Elcan

Rebecca Galler and Clark Morrison

Liz Goodrow

Lucie Kober

Chemi Lo

Melissa Macko

Nancy Minnig

Marlene Philipbosian

Jocelyn Swanson

Cynthia Blair Tognotti

Contributor

Anonymous

Tribute Donations*

In Memoriam

Sophie Clark

Max Heffernan

In Honor of

Olivia Bellamy

Diane Elcan

Sara Furrer

Richard L. Griffin

Mickey Halverson

Debbie Hirth

Judy Kell

Cathy Maloney

Steve Mincey

Nancy Minnig

Richard Simpson

Birthday or Holiday Gifts

Debbie Hirth

Desarie Sy

Wedding Gifts

Tyler and Kristina Chuang

*Acknowledges donations received
between April 2022 and April 2023*



TUDOR ESTATE, HILLSBOROUGH



A wrought iron gate quietly slides open and you feel as if you are being transported to another place in time. Soaring California Redwoods flank either side of the driveway, luring you in to this secluded Tudor estate. The home was built in 1919 and is surrounded by an acre of park-like grounds, re-designed by Walter Guthrie who worked for nearly a decade with famed Peninsula landscape architect, Thomas Church. The current family is only its second owner.

Patterned bricks lead you up the front porch steps to the massive four-centered arch front door. This style of arch is an architectural element that you will see inside and out as you admire this stately home designed by Edward Bright Hussey, who studied under the tutelage of Julia Morgan and Bernard Maybeck. The two-story entry hall is clad in painted wood, original to the home, and the warm tones are accentuated by Persian carpets from regions in Iran, vintage Venetian style mirrors and wall sconces. Your eye will be instantly drawn up to the over-sized crystal chandelier and intricate ceiling medallion leaving you to wonder what a feat of engineering it took to have it installed!

The rooms off the hallway are concealed with leaded glass doors. The library is filled with floor to ceiling bookshelves and, stocked with some favorites from the previous homeowner's collection. Cozy chairs and an abundance of natural light from the French doors make it the perfect place to curl up with your favorite novel and relax.

As you peek into the living room, the furnishings are reminiscent of a French chateau, with gilded white and gold upholstered chairs and sofa. An elegant fainting couch, stacked with interesting toss pillows, is adjacent to the baby grand piano and faces the marble fireplace. Enormous crystal chandeliers sparkle from above and set the tone for entertaining a large group.

Step across the hall to the formal dining room with seating for 12. The ornate chandelier's teardrop crystals cascade toward the walnut glass-topped table, creating an illusion of liquid light. A large round mirror bordered with the Greek key pattern mimics the banding on the dining room table.

Returning to the foyer, a narrow hallway leads to the kitchen via a butler's pantry. Along the way, you will notice a step down into the guest powder room with Venetian plastered walls. A unique nest-like sink pedestal, formed of wrought iron twigs and vines, sits on a floor of stamped Arabesque tile and supports the dense stone basin. The curved back stairway's risers are accentuated with Persian Haft Rang tiles from Isfahan, each trio a different pattern.

As you enter the kitchen, casual dining and family rooms, remodeled in 2016, be prepared to be wowed! They are designed for a family who likes to entertain, with a nine-foot quartzite island, multiple prep areas and sinks. The dual-fuel six-burner Thermador range and custom hood are framed with a

beautiful wall of multi-toned Arabesque tiles with a silver border echoing the appliances and sinks. The cabinets and range hood are finished in a wonderful neutral tone, complimenting the warmth of the countertops and dark wood plank flooring. This bright and cheery area is filled with natural light from the many skylights and glass doors leading to the grounds.

Exiting the home to a large wrap-round brick patio, there are multiple seating areas for alfresco dining. Centuries old, White Oak trees' branches twist and turn, reaching out to welcome the guests. Well-manicured hedges, punctuated with gurgling water features and stone statues, surround an expansive lawn. Beyond the circular rose garden and large fountain, children will enjoy a wonderful play area, covered pergola and a whimsical animal topiary. This historic estate has stood the test of time and will continue provide joy to its owners for years to come.

**IN THE
HOMEOWNERS'
WORDS:**

**What part of the kitchen
makes you smile every
time you walk in?**

"Our big kitchen island with the beautiful countertop and all the floral arrangements and seasonal decorations!"

"Also, without a doubt our garden! It is incredibly welcoming and soothing. I love the original designs and features and I am blessed to be able to add more to enhance it. Especially the water fountains and just the energy and vibe that overwhelms one with this ultimate feeling of serenity."



STAGING

Studio Shop Gallery

FLORAL DESIGN

Floral Art + Décor

VENDORS

Bonjour Bakehouse

Caffe Carello

Moji's Little Kitchen

New Generation Vintage

Suki's Honey Bees

HOME RESOURCES

Architect: Alex Mortazavi

Interior Design: Kitchen Matrix





STUDIO SHOP | GALLERY

TRUSTED MATCHMAKERS
FOR ART LOVE AFFAIRS SINCE 1915.

ART GALLERY ▪ PICTURE FRAMING

244 PRIMROSE ROAD
BURLINGAME, CA 94010
WWW.STUDIOSHOPGALLERY.COM



What Home Means to Me

“Home is where love and warmth surround me... a welcoming place where family and friends gather... sharing a lifetime of memories together... A comforting sanctuary and cozy bed after a long day’s work... the scent of morning coffee and an evening cocktail on the patio. Simply put, there’s no place like home!

—DE

Ladera Garden and Gifts

3130 Alpine Road, Suite 380
Portola Valley, California 94028
650.854.3850

LADERAGARDENANDGIFTS.COM

2029 Ralston Avenue
Belmont, California 94002
650.232.7154

THINKING OF BUYING OR SELLING YOUR HOME?



“Raziel helped us focus on the exact neighborhood that we wanted to live in as well as some intangibles that we didn’t even know we could strive for. Once we completed the intake process, we bought our home extremely quickly.”

HEATHER & EKINE

CONTACT RAZIEL FOR A CONSULTATION TO DISCUSS YOUR THOUGHTS AND PLANS.



Raziel Ungar, Realtor

650.822.7088 | BurlingameProperties.com

Info@BurlingameProperties.com

DRE#: 01701234



COMPASS



Join Mark Lucchesi aka "Mark at the Mic" as he takes you to Burlingame California for the podcast he has created and produces for the Burlingame Historical Society, "*Burlingame, it's a Small Town.*" Interviews with Civic Leaders, Business owners and citizens.

 youtube.com/c/markatthemic



LET'S TALK ABOUT REAL ESTATE



Serving clients in the Mid Peninsula to achieve their goals. In the meantime, let's support Sol Mateo for all of the incredible work they do.

COMPASS

DRE# 00911540 650-464-2097 ellen.mazzoni@compass.com ellenmazzoni.com



What Home Means to Me

“For me, home is a sanctuary; it is a place of shelter and refuge, a place of love, joy, and peace. Home is a place of acceptance and safety. Home is a place to hope and dream, It is not only the memories of the past but of the future. It is not always a physical space but within me.

—LK

CHRISTIAN HUEBNER INTERIORS, INC.

Christian M. Huebner
cmhuebner@huebnerinteriors.com

1325 HOWARD AVE., # 320
BURLINGAME, CA 94010

O- (650) 558-8700
M- (415) 596-6700

BONJOUR BAKEHOUSE

PERFECTLY PREPARED TREATS BAKED



No preservatives, No fillers, No artificial flavors. Only the best ingredients!

Visit us www.bonjourbakehouse.com

Follow us   [@bonjourbakehouse](https://www.facebook.com/bonjourbakehouse)

RENOVATED CLASSIC RANCHER, HILLSBOROUGH



Dennis Mayer Photography

Tucked behind a wall of Italian Cypress trees, like sentries standing at attention, is this beautiful single-story ranch-style home. The exterior is covered in horizontal neutral gray sheet siding and the porch is protected from the elements with an A-frame portico supported by exposed redwood columns. This Rancher's 1950's beginnings are barely detectable after an extensive 15-month renovation. The homeowners knew what their growing family required and extended back of the house in order to gain a primary suite, large open kitchen and separate family room.

Once inside, the formal living room is connected to the dining room, creating a cohesive entertaining space in soothing tones of blue and oatmeal. The Western-exposed wall of windows lets in an abundance of natural light, enhancing the variegated Oak plank flooring. The original ceilings are now vaulted with recessed lighting, culminating in a rustic candle arm wrought iron fixture by Ralph Lauren for Visual Comfort over the patterned wood dining table. Skirted Parson's chairs and cane back faux bamboo chairs offer seating for eight. Large framed photographic art by Marin's Caroline Pacula completes the Bay Area feel.

From the dining room, you enter the kitchen and eat-in dining area. There is a playful nook covered in Schumacher's Pandora in Onyx and Jade, with bench seating and storage drawers finished with leather pulls. The oval bleached wood table is

reminiscent of a surfboard and surrounded with rattan metal frame armchairs by Palacek, continuing the calm, coastal vibe.

IN THE HOMEOWNER'S WORDS:

What part of the kitchen makes you smile every time you walk in?

"I just love the overall feel. If I have to pick one thing, I would say the high vaulted ceilings and windows which allow for so much natural light."

The kitchen is bright and cheery, with an over-sized skylight and picture window facing the yard and rectangular pool; your immediate impression is the feeling of being wrapped in nature's cobalt and cerulean blues.

The large island has four under counter bar stools and is topped with leathered Macaubas Fantasy quartzite, a natural non-porous and stain resistant stone from Brazil. It also features a prep sink, panel-ready Fisher and Paykel dishwashing drawer and Wolf microwave. The perimeter countertops are a dark gray

Adamantium polished granite, offset by a wall of undulating glossy white ceramic tile from Spain by Akdo. Behind the dual-fuel, Wolf six-burner range is a chevron patterned marble backsplash, topped with a custom hood banded in a wood tone to match the flooring.

Laundry will never feel like a chore in this spacious room made possible by removing a small bedroom. The diamond shaped mosaic tiles from Artistic Tile in San Francisco add texture and interest, while the accent wall facing the kitchen features the same wallpaper as in the dining nook.

The powder room is wrapped on three sides by Osborne & Little Marmara Aqua-Pale Grey wallpaper. The marble-topped vanity, backed by a wall of Allison Thassos Marble WJ Mosaic Mixed Finish Stone from Artistic Tile, is beautifully offset by a white honeycomb marble patterned floor.

The family room is large enough for the family to relax and entertain, with high ceilings, built-in shelving and storage surrounding the TV and fireplace. The wet bar has dual Edge Star wine refrigerators and the countertops and backsplash are a black polished Agata Granite, quarried in Brazil. The bronze orb light fixture is from Currey & Company.

The back yard feels very private, surrounded by towering Cypress trees on three sides. A bocce court and putting green have been sacrificed to make way for the Accessory Dwelling Unit (ADU) in progress. As you step across the blue flagstone patio, a sport court, complete with basketball hoop, invites young and old to come play and imagine closing your eyes, dropping your head back and soaring to the skies on the adjacent swing set.

Under the peaked redwood patio covering is a full outdoor kitchen and Wolf barbeque. A cement topped table from Terra in Burlingame and whimsical hanging chairs from Restoration Hardware set the tone for dining under the stars, while enjoying the appropriate mood music with an integrated Sonos sound system. The large double cirque hand-forged fixture, similar to family room's, is from Vermont's Hubbarton Forge. This home is all-season perfect, both inside and out.



STAGING

Cynthia Foti Interiors

VENDORS

Fiamma Candles

I Dream of Sweets

Spirited Pots

HOME RESOURCES

Architect: Ellis Schoichet, AIA—EASA Architecture

Interior Design: Cynthia Foti Interiors

Contractor: Don D'Elia—D'Elia Construction

Countertops: All Natural Stone



Cynthia Foti Interiors

*Whole Home
Interior Design Services*

Contact me at
cfoti@cfotiinteriors.com
for a free consultation



SPIRITED POTS

dig a little,
sip a little,
laugh a lot!



www.spiritedpots.com
650-984-SUCC

COMPASS



Donna Marie Baldwin

proudly supports

SolMateo

Thank you for your tireless work in supporting mental health resources for our community.

DRE #00560346 | Realtor® | DonnaMarieBaldwin.com
Donnamarie.Baldwin@Compass.com | (650) 796-6080

~ Serving the Peninsula since 1976 ~

Emily Joubert

home & garden

Woodside

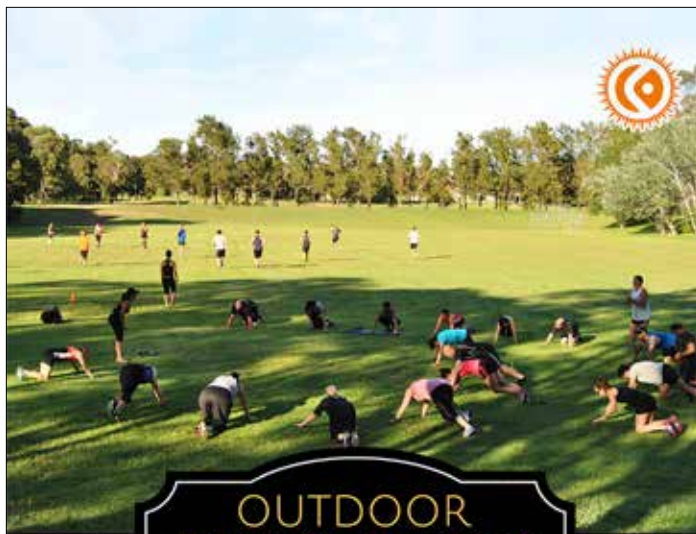
Suki's Honey bees

Robert Silverstein & Suki Kamman

Burlingame, CA. 94010

phone: 650-255-1026

email: sukishoneybees@gmail.com



**OUTDOOR
FITNESS CLASSES**

WEEKDAY MORNINGS
PALO ALTO & BURLINGAME

With two inspiring locations it's easier than ever to **get out** and **get fit!** Our experienced trainers provide fun yet challenging workouts that are guaranteed to keep you motivated and fit. Let **OutFit** help drive your health and fitness journey.

Intro Offer \$99

Get Out. Get Fit. Get Social.

Limited space available. Email to register!

Call/Text 650-387-3137

www.getoutfit.com

Window fashions to match every design personality.

HunterDouglas



Pirouette® window shades

Hunter Douglas offers a wide variety of window fashions in an array of fabrics, textures and colors. Contact us today. We're the Hunter Douglas experts, guiding you in the selections that'll make your home even more beautiful—whatever your style.

Rebarts Interiors LLC
1227 Burlingame Ave. Burlingame, CA
M-F: 10:00 am - 5:00 pm
Sat: 11:00 am - 4:00 pm
(650) 348-1268
www.rebarts.com



HunterDouglas Gallery

©2022 Hunter Douglas. All rights reserved.
All trademarks used herein are the property of Hunter Douglas or their respective owners.15948418

**Thank you volunteers
and sponsors for
making the
41st Signature Kitchen
Tour a success!**



JM JUDY MEUSCHKE
Realtor® Lic# 01471840
650.400.2543
judy.meuschke@compass.com
judymeuschke.com
COMPASS 1440 Chapin Ave., #200
Burlingame, CA 94010



**What Home
Means to Me**

“ Home is my happy place. It holds my heart and my dogs. ”

—JMR



MOLLIE STONE'S

CATERING.MOLLIESTONES.COM

Michael: Store Manager
Mitsu: Assistant Store Manager
1477 Chapin Ave.
Burlingame, CA 94010
Ph: 650.558.9992

Phil: Store Manager
Mary: Assistant Store Manager
49 West 42nd Ave.
San Mateo, CA 94403
Ph: 650.372.2828

Write Invite

invitations for all occasions

weddings · bar/bat mitzvah
birth announcements · favors
parties · holiday cards

personal service · large selection · discount

Marian Sosnick

650-578-9215
writeinvite.com
marian@writeinvite.com

BEAUTYCOUNTER
Beauty should be good for you.



MICHELLE C. TAYLOR
BEAUTYCOUNTER MANAGER

650.704.5334 | michelletaylor.bc@icloud.com

michelletaylor.bc

beautycounter.com/michelletaylor2



Jeff Harber
BROKER ASSOCIATE



The Harber Group

The Harber Group
LICENSE # 01779765
Compass® Burlingame
C 650.740.2418
O 650.375.1111
Compass.com
theharbergroup.net



The Alexa Fallon Collection
www.lexieloucollection.com

I Dream of Sweets 

Lori Chase - Nardi
ldreamofsweets@gmail.com
Phone: (650)458-7463
Instagram: @ldreamofsweets_

Jeff/Jacki Lindstrom



Ph: 650 . 343 . 9562
Fx: 650 . 343 . 1700
www.jplindstrom.com
Lic. 762623
1015 California Drive
Burlingame, CA 94010

IZMIRIAN

ROOFING AND SHEET METAL

Providing
Comfort and
Shelter to
Peninsula
Residents
Since 1924

HEATING ■ AIR CONDITIONING
INDOOR AIR QUALITY

299 S. Railroad Ave. ◦ San Mateo
650-342-3200 ◦ www.izmirian.com

CA CONTRACTOR LICENSE #277624



Kyle Mills-Bunje
(650) 321-3833
kyle@caffecarrello.com
www.caffecarrello.com



Jewelry, hats,
decor, gifts
& clothing

519 Main Street
Half Moon Bay
CA 94019
(650) 726-3821

Carol & Monica

The Coastside's French Connection since 2001

Our members are so creative and dedicated to supporting MHA, StarVista and SolMateo. This was written in 2022 for our End of Year Luncheon where we presented checks to the agencies we support and celebrated our year long efforts. It sums it all up!

There is a group called SolMateo
Making friends, raising funds is just our way-o
Thanks for coming to our Year End lunch
This a fun, sassy but industrious bunch

Although COVID tried to sideline us
We pivoted and kept making a fuss
We asked, how do we do this? How do we keep our
message out?
Zoom meetings, gathering outside, PUNCH magazine—
that's what we're talking about!

StarVista and MHA need us more than ever
People are hurting, feeling alone, we need to be clever
So we wrote letters and served lunches in friendship
While keeping our own mental health from taking a dip
We gathered outdoors, scraping Holiday Auction &
Luncheon chores
Instead we did a "Gifts of the Season" mailing ask
And filled our coffers, right on task

We hosted tables at the market of farmers
Selling tickets and our group, to a few new charmers
We donated blood and played some Bingo
Learned much about tech and social media lingo

We know how to celebrate and then get back to work
We thought having the Kitchen Tour this year, just
might work
So we got busy remembering how
Booking vendors and five homes that really would WOW!

We hoped and we prayed that the people would come
And they did and they did in hundreds and some
Which happily brings us here to today
Celebrating giving our hard earned money away!

So to our potential new members and invitees
I'll be honest we need leaders as well as worker bees
Please join us and lend us a hand
The rewards come back even greater than grand.

I tip my cap to many in this room
I realize this lunch is like your annual bloom
Your years of service to this old league
Measure in decades without much fatigue.

Now has come the time
To end this silly rhyme
it's time to raise our glasses & toast
To this small, hard working group that does the most!

Cheers!
Jenny Smith





Jamie H. Duddy, M.F.T.

Individual & Family Therapy
Divorce, Mediation & Custody Issues

1650 Borel Place, Suite 209
San Mateo, CA 94402
Phone: 650.655.2724
Fax: 650.655.2797
JDuddyMFT@gmail.com
www.JamieDuddy.com



What Home Means to Me

“Home is a place where memories are made. It is where we feel belonging and acceptance among our tribe. It’s where we come to celebrate joy and where we retreat to find rest and healing. Home is familiar and home is comfort.”

—MAT



KAZKA
Handcrafted Fruit Seltzers & Slushes

Instagram: sf.kazka



Julie B
JulieBstudio.com

Julie Buelteman
jewelry design
PO Box 370480
Montara, CA 94037
650 766 9252
juliebstudio@gmail.com
facebook: @juliebstudio
instagram: #juliebstudio

Art Attack!

OIL PAINTING

BURLINGAME



@ArtAttack911 (650) 552-0001

CLASSES · CAMPS · PARTIES

www.ArtAttack911.com



COMPASS



Real estate moves at its own pace.
I'm here to help you
move at yours.

Reach out to start the conversation.

Christina Ng
DRE#: 00929017
christina.ng@compass.com
415.420.4828



Draeger's
MARKET

FIAMMA CANDLES

Lorena Cicciari
CEO
415-760-9411
lorena@fiammacandle.com
www.fiammacandle.com



New Generation Vintage

www.newgenerationvintage.com

Lisa Sayed

415-519-2391

ngv3719@gmail.com

Set your student up for
College Admissions Success!!



Peninsula
Scholars

Full-service admissions prep
and advisory counseling.

Amy Grenier - College Admissions Coach

aslgrenier@gmail.com • 415-350-8180

www.peninsulascholars.com



• BRING YOUR VISION HOME •



Ellis A. Schoichet AIA

www.EASAarchitecture.com
Burlingame California
650 • 343 • 3452

Moji's Little Kitchen
Catering & Bakery Services
 "From my heart to your table"

Mojgan Momeni
 Manager

408-829-9768
 @mojganm
 bobyjune@gmail.com

@BYSAUTS
 Custom illustration and design by Alex Sautter
 Shop gift wrap, mugs, stationary, apparel, and more on Etsy!
<https://www.etsy.com/shop/bysauts>

SUE SUBBOTIN INTERIORS
 Interior Designer - Sue Subbotin Riviello
 Studio: (650) 315-2379
www.SueSubbotinInteriors.com

ALL THE
 RIGHT
 INGREDIENTS
 FOR A
 SUCCESSFUL
 REAL ESTATE
 TRANSACTION

Real Estate Strategies
 and Personalized
 Solutions

Pandy Garvic
 DRE# 01407044
 650.888.9586
 pandy.garvic@compass.com

COMPASS
 1440 Chapin Avenue, #200, Burlingame

Compass is a real estate broker licensed by the State of California and abides by Equal Housing Opportunity laws. License #01527235. 0License #01991628, 01527235, 1527365.

What Home Means to Me

“Home is wherever your most important pieces of your life are. For some, that is possessions. For others, a spouse. For others, children and family. And others, it’s simply a place to kick your feet up and be at peace with yourself.”

—MK



Since 1993

Alan's Cafe

Breakfast • Lunch • Catering

1408 Burlingame Avenue, Burlingame, CA 94010
 (650) 348-0417 • info@alanascafe.com
 www.alanascafe.com




Lynnette Watterson
 110 De Anza Boulevard
 San Mateo, CA 94402
 (650) 342-6978 • Fax (650) 345-7578
 lynnette@crystalcleaningcenter.com
 www.crystalcleaningcenter.com




KLEEBAUER
 PROPERTIES

Pamela Kleebauer-Shaffer


pam@kleebauerproperties.com 1325 Howard Ave #324
 Direct: 650.759-2992 Burlingame, CA 94010
 DRE #01732569 www.kleebauerproperties.com



GARRETT A. SMITH, M.D.
 Medical Oncology

55 Francisco Street, Suite 700
 San Francisco, CA 94133
 smithintegrative.com

Office: (415) 682-0843
 Fax: (415) 682-0880



Baywood Private Wealth Management
Flor Santana
 Managing Partner
 CA Insurance Lic#0E60888

1600 W Hillsdale Street, Ste 102
 San Mateo, CA 94402
 (650) 472-3037 Office
 (650) 576-2068 Cell
 (888) 315-1729 Toll Free
 flor@baywoodpwm.com
 www.baywoodpwm.com

Flor Santana is a registered representative with, and securities and advisory services offered through, LPL Financial, Member FINRA/SIPC. LPL Financial and Baywood Private Wealth Management are separate entities.



Granola: Reinvented

refined sugar free + all natural
 gluten free, dairy free, stress free
 order today at www.thekitchen.com



**RHINO
 DESIGN
 WORKS**

This book would not be possible year after year without the accomplished, ingenious eye of our faithful graphic designer, Jill Reinemann. We are forever grateful!

jill@rhinodesignworks.net



**SolMateo Members
2022-2023**

ACTIVE

- Toni Adams
- Liz Buljan
- Mindy Carr
- Perissa Clark
- Kay Coskey
- Jamie Duddy
- Diane Elcan*
- Debbie Elowson
- Sara Furrer*
- Rebecca Galler
- Liz Goodrow
- Debbie Hirth*
- Jill Johnson
- Terry Kuperschmid
- Judy Kell*
- Kai Yee Lee
- Melissa Macko

- Pam Mincey*
- Nancy Minnig*
- Sue Subbotin Riviello
- Flor Santana*
- Julie Sautter
- Jenny Smith*
- Ginny Stewart
- Alexandra Strambi*
- Jennifer Royer Sullivan
- Jocelyn Swanson
- Mary Ann Teixeira*
- Cynthia Blair Tognotti
- Ana Topalian

ASSOCIATES

- Jacqueline Bigelow
- Nina Clinton

PATRONS

- Shar Beckheyer-Arnold
- Angela Bruno-Castro
- Judi Cittadini
- Josie Ewing
- Nancy Gans
- Cindy Hohle-Duncan
- Lucie Kober
- Chemi Lo
- Jana Magginetti
- Cathy Maloney
- Ann Malouf
- Angela O'Connor

- Kathy O'Rourke
- Cris Perry
- Sara Prusko
- Patricia Rodley
- Eileen Silver
- Linda Snyder
- Marian Sosnick
- Desarie Sy
- Michelle Taylor
- Cindy Thompson
- Dierdrie Zimits

**Board of Directors*

